



# The Facta

Deeds Not Words Facta

Non Verba

Term 1 – Week 2 (3<sup>rd</sup> February 2023)



## Dates for the Diary

FEBRUARY 2023		MARCH 2023	
6 February	Kindy Begin	13-24 March	NAPLAN, Years 3 & 5
13 February	Swimming Carnival	20-31 March	Parent Teacher Interviews
27 February	WSPSSA Swimming Carnival	21 March	Harmony Day
		23 March	National Ride to School Day



# Principal's Message

Dear Parents and Carers,



Welcome to our first newsletter for 2023. I hope this message finds you and your loved-ones safe and well. The start of the year is always an exciting time for families and schools. Children reconnect with their friends and teachers, along with the anticipation of being in a new class, a new grade, meeting new friends and connecting with new teachers. We are looking forward in working alongside you, embracing the changes ahead, as our children leap into another year.



Happy Lunar New Year to all our families who celebrate this special time of year. Best wishes for the year ahead.

## Welcome to Kindergarten, the class of 2023

The long-awaited day has finally arrived. Our Kindergarten students are here! What a journey it has been for our kindies and their parents/carers. Throughout the week, they have been busy transitioning and completing their Best Start Assessment. On Monday, they will begin their first full day of school. We are enormously proud of you and we are so happy that you are part of our school!

## Staffing & Class Structure

We have had a higher-than-expected number of new enrolments this year which has impacted on class numbers. **Therefore, a restructure and change of class teachers is highly possible.** Once enrolments stabilise and numbers are submitted to the Department of Education, we will then be able to confirm the classes and the teachers for the year.

Here are the current classes and teacher/staff roles:

KB – Mrs Burns

K/1G – Ms Gil

1/2S – Mr McGee (R/Assistant Principal)

2M – Mr McLaren

3D – Ms Doualetas

4KS – Mrs Kang & Mrs Saad

4/5C – Ms Chen

5T – Mr Conaghan

5/6D – Mr Destefano (R/Assistant Principal)

6Z – Ms Zhang

# Principal's Message, continued

## **Inclusive Classes**

K/3A – Ms Akgun

3/4D – Mrs Darlow (Assistant Principal – Special Education)

4/5S – Mrs Slattery

## **Specialist Teachers:**

Community Wellbeing – Mrs Vermiglio (Assistant Principal)

Assistant Principal Curriculum & Instruction – Mrs Soteriou (Assistant Principal)

Learning and Support, Multi-Lit Program – Mrs Montgomery

Learning and Support (Numeracy) – Mrs Papas

Intensive Literacy and Numeracy Support Program – Mr Murray

English as an Additional Language/Dialect (EAL/D) – Mr Walsh

Italian – Mr Crisafulli

Library – Mrs Purcell

## **School Learning Support Officers:**

Mrs Gaya – Inclusive Class (4/5S)

Mrs Katerina – Inclusive Class (3/4D)

Mrs Nina – Inclusive Class (K/3A)

Mrs Sivva – mainstream classes

## **Please keep your child at home if unwell**

Now more than ever, it is important that your child stays at home if unwell, no matter how minor the symptoms. This is extremely important in protecting our school community, particularly for our students, staff and family members who are immunocompromised or have serious health concerns. Please use a RAT kit before sending your child to school, if you are in doubt. **Children must be symptoms free, even if the RAT test is negative, before returning to school.**

## **Meet the Teacher**

We are currently planning our Meet the Teacher sessions for this term. Details and dates will be advised shortly.

As always, please do not hesitate in contacting the school if you have any questions or concerns.

## **Our contact details are below:**

**Phone number: 9744-8452 or 9744-8427**

**Email: [concord-p.school@det.nsw.edu.au](mailto:concord-p.school@det.nsw.edu.au)**

A happy 2023 to you all!

If you see me in the playground, please pop over to say hello!

**Anna Vountoulas**  
**Principal**



# Principal's Awards / Pennant Process



**Three Class Awards = 1 Principal's Award**

**Three Principal's Awards = 1 Principal's Pennant**



**Note:** Class Awards and/or Principal's Awards must be handed to the front office 2 days prior to the date of Assembly

## *Kindergarten Enrolments - 2024*

We are currently taking enrolments for our kindergarten classes for 2024.

If you or someone you know would like more information about our school or have a child ready to commence Kindergarten in 2023, please contact the school on:

Phone: 9744-8427 or 9744-8452

Email: [concord-p.school@det.nsw.edu.au](mailto:concord-p.school@det.nsw.edu.au)

We are looking forward to welcoming new children and families to our school.





# Inclusive Classes

Good afternoon Parents and Carers,



Welcome back to the 2023 school year. We hope that your summer vacation was a time for rest and relaxation. It has been wonderful to see all our students return smoothly to their new 2023 classes. Thank you to all our family members and staff for supporting our students in such a positive way.

Welcome to our two new members of the Inclusive Classes, Zen in K/3A and Abraar in 3/4D. We look forward to working with you both in 2023.

## Classes:

These are the students in our Inclusive Classes:

K-3A Miss Asli and Miss Nina

Students: Aadvik, Amir, Leon, Mahad, Tristan and Zen.

3-4D Miss Fran and Miss Katerina

Students: Abraar, Adam, Flynn, Hamoudi, Joel, Vasili and Ziyen.

4S Miss Ann and Miss Gaya

Students: Aaruran, Edmon, Ethan, Hermeslla, Ibrahim and Sarah.







# Inclusive Classes

## STREAM

This week we were straight back into our STREAM Classes. Miss Asli prepared a great lesson around chemical science, solids and liquids. We made **Ooey Goey Oobleck!** Great work to all our scientists in the Inclusive Classes! Please see the great snapshots below. Warm regards, *The Inclusive Team*



# CHOOSING A HELMET WHEN RIDING A BICYCLE OR SCOOTER

Always wear a helmet when riding a bicycle or a scooter. Helmets greatly reduce the risk of head injuries. In NSW, riders including children are required by law to wear an approved helmet.

When choosing the right helmet for your child, consider the following:

- Always choose an approved helmet that carries the Australian and New Zealand Standard logo. This is often displayed as a sticker on the inside of a helmet.
- Make sure the helmet is the right size. It should be comfortable and not too tight or too loose.
- Check to see if you can place two fingers above your child's eyebrows to the bottom of the helmet. The position of where the helmet sits on your child's head is important.
- The under-chin strap should be correctly adjusted, not twisted, and always buckled securely. There should be a one finger gap between the strap and the chin.
- Pick a helmet with a bright colour so it can be easily seen. Have your child help select their helmet colour. If you let your child have a say, chances are they will be more likely to wear it.
- Never wear a damaged helmet. If a helmet has been involved in an incident or dropped from a height, it should be replaced even with no visible damage. Check to see the condition of the shell and straps/buckle.

Help to promote safe riding behaviour by supervising your child. It's a great idea to talk with your child about the road environment including the traffic conditions, road signs and how and where they can ride safely.

By law, children under the age of 16 can ride on a footpath unless there is 'No Bicycles' signage installed. An adult rider who is supervising a bicycle rider under 16 may also ride with the young rider on the footpath.

For additional safety tips and information, please click the resources below:

- [City of Canada Bay – Bicycle safety](#)
- [Bicycle riders – road rules](#)
- [Helmets and safety gear](#)
- [Safe riding](#)
- [Shared paths](#)

## CHOOSING A HELMET



In NSW, all riders including children are required by law to wear an approved helmet. When choosing a bicycle/scooter helmet consider the following:

- Does it have the Australian and New Zealand Standard logo?
- Is the size/position correct for my child's head?
- Can the strap be adjusted?
- Is it comfortable to wear?

 City of  
Canada Bay



# Our school has a new look **online payment page!**

---

We're now accepting payment for Concord Public School via the school's website. New features allow you to access:



Anywhere, anytime from a mobile or tablet (as well as a desktop computer)



In a preferred language



Easily without needing to log on, register or enter a Student Registration Number.



Education



# Our school has a new look **online payment page!**

We're now accepting payments for Concord Public School via the school's website. To make a payment, simply:



Visit our school website on your mobile, tablet or desktop computer



Select 'Make a payment' from the main page menu



Enter the required student, contact and payment details

**Note:** You are **NOT** required to provide the 9-digit Student Registration Number.



Check your email for a copy of the receipt of payment



Education



# ARE YOU WEARING THE CORRECT SCHOOL UNIFORM?

*Summer Uniform (Term 1 and Term 4)*



*Sports Uniform (Friday's and on request)*



*Winter Uniform (Term 2 and Term 3)*



*Uniforms are available for order via your Quickcliq account*



*Thank you from your SRC Representatives*





# CONCORD OSHC



+61 449 734 922



[info@concordoshc.com.au](mailto:info@concordoshc.com.au)

Contact Us





## CHESS!!

Learn to be a chess champion! Coaching for students at Concord Public School is held on Mondays from 8:00am to 8:55am, starting on 6 February 2023.

Learning and playing chess helps children develop their logical thinking and problem solving skills, improves their concentration and focus, while also being a great source of enjoyment. Activities include group lessons on a demonstration chess board or interactive whiteboard, puzzle solving and fun practice games.

Students earn merit awards by making checkmates, or by displaying skills and positive qualities, which all good chess players strive to develop.

If your child is interested in taking part, you can collect an enrolment form from the school office, or email [enrol@sydneyacademyofchess.com.au](mailto:enrol@sydneyacademyofchess.com.au) for a copy. For all enquiries, please contact Sydney Academy of Chess on (02) 9745 1170.







Positive Partnerships have a range of autism workshops specifically for parents/carers and school staff.

# NEW SOUTH WALES

## TERM 1 & 2 WORKSHOPS 2023

- Our parent and carer workshops are designed to help parents and carers understand their young person and foster productive school, family and community relationships.
- Our autism programs are designed to help educators increase their understanding of autism and improve their skills and expertise when working with autistic students. They also provide strategies and resources for strengthening relationships between home and school.

### Term 1

Early March	Professional Learning Online Sessions	NSW Online
March	Parent Carer Online Sessions	National Online
Mid March	2 Day Parent Carer	Narellan
Late March	Diverse Community 2 Day Parent Carer - Cantonese	Fairfield
Early April	1 Day Parent Carer	Hornsby
Term 1	Diverse Community 1 Day Parent Carer - Arabic	Bexley
Term 1	Diverse Community 1 Day Parent Carer - Korean	Sydney

### Term 2

May	Diverse Community 1 Day Parent Carer - Chinese	Sydney
May	Parent Carer Online Sessions	NSW Online
May	Parent Carer Online Sessions	National Online
Early May	2 Day Parent Carer	Wollongong
Early May	2 Day Professional Learning	Armidale
Mid May	2 Day Schools & Families Together (Day 1 - Schools only)	Central Coast
Early June	2 Day Professional Learning	Penrith
Late June	2 Day Schools & Families Together (Day 2 - Schools & families)	Central Coast

NB: dates are subject to change

If you would like to find out more, please contact:

Trish Nicoll, Coordinator NSW/ACT | M: 0424 254 861 | [tnicoll@positivepartnerships.com.au](mailto:tnicoll@positivepartnerships.com.au)

To learn more about the program types, please scan the QR code or visit [www.positivepartnerships.com.au](http://www.positivepartnerships.com.au)



Diverse Communities



Parent and Carer



Professional Learning



Aboriginal & Torres Strait Islander Peoples



# TENNIS LESSONS

## Concord Public School

Active kids vouchers accepted

**Fun | Active | Skills**  
**Hot Shots**

**Rain Hail or Shine**

### Please Note:

- Open to children of all abilities
- All coaches are Tennis Australia or ATPCA qualified.
- Full supervision
- Reduced sized courts
- Modified equipment

**When:** Thursday Mornings.

Commencing Week 2, Thursday 9th February, 2023

**Where:** School Cola

### Time:

Thursday Mornings :

7:30am - 8:00am (Year 3,4,5 & 6).

8:00am - 8:30am (Kindy, years 1 & 2)

**Rego Cost:** \$180 (9 week term)

### TENNIS RACQUET OFFER

(Demos Available)

\$40 junior racquets

\$50 Off Main Frame racquets & 26" Racquets



## SNAUWAERT

## Register Now!

[www.jmurphysports.com.au](http://www.jmurphysports.com.au)

(Click Bookings tab for options)

*\*Private lessons also available\**

Contact James for any questions  
or bookings:

Mobile - 0432 943 745  
[jmurphysports@gmail.com](mailto:jmurphysports@gmail.com)





# Burwood Police Area Command

Burwood Police Station 02 9745 8499  
Ashfield Police Station 02 9797 4099  
Five Dock Police Station 02 8753 3599

Dear Members of the School Community

A **parking offence** is when you illegally park or stop a vehicle on a NSW public or private road. In most cases, you'll be issued a penalty notice which will require you to pay a fine.

For more **serious parking offences**, you may also have demerit points added to your licence. The most common offences include parking a vehicle:

- within 10m of an intersection with no traffic lights, unless a sign says you can
- incorrectly into a parallel or angle parking space
- in ticketed, metered or coupon parking space without paying
- in loading or no stopping zones
- for longer than the time allowed
- outside a marked parking space
- on a medium or nature strip
- in a mobility parking spot without a permit.

**Serious parking offences** include:

- parking offences in School zones
- parking in a mobility parking space without a permit
- using your mobility permit incorrectly or illegally
- parking on or near intersections with pedestrian crossings.

You can report these activities to POLICE using the following contacts.

<b>ALL EMERGENCIES</b> <b>000</b>	<b>Non-Emergency</b> <b>131 444</b>	<b>CRIME STOPPERS</b> <b>1800 333 000</b>	<b>Online Services</b> <a href="http://www.portal.police.nsw.gov.au">www.portal.police.nsw.gov.au</a>
<i>When Life is in danger</i>	<i>If you are a victim of crime other than life threatening</i>	<i>Report Information on criminals and criminal activity</i>	<i>Community Portal</i>

If you have any further enquiries, please do not hesitate to contact the Crime Prevention Officer, Senior Constables Latu on 02 9797 4050.

Kind Regards,

**Crime Prevention Team**

Ashfield Police Station | Burwood Police Area Command  
| 14 Victoria Street, Ashfield NSW 2131  
Email: [latu1lis@police.nsw.gov.au](mailto:latu1lis@police.nsw.gov.au) | Direct Phone: 02 9797 4050 | Direct  
Eaglenet: 48050 | Available Mon, Tues, Thurs, Fri 8am to 4.30pm



# SCHOOL ZONE OFFENCES

**SCHOOL ZONE**

8 - 9<sup>AM</sup>  
2<sup>PM</sup> - 4<sup>PM</sup>  
SCHOOL DAYS

40

Children and young people are extremely vulnerable in the road environment. They need you to take extra care when driving and parking around schools. Penalties are greater for breaking the road rules in a school zone. Please choose safety over convenience.



## No Parking

You have 2 minutes to drop-off or pick-up passengers, staying within 3 metres of your vehicle. Your vehicle must not block the flow of traffic or become a danger to other road users.



## Mobile Phone Use

You must not use a hand held mobile phone while driving.



## No Stopping

You must not stop at any point on the road or kerb in the direction of the arrow.



## Intersections

You must not stop on or within 20 metres of an intersection.



## Bus Zone

You must not stop in a Bus Zone unless you are driving a bus.



## Driveways

You must not stop on or across a driveway.



## Pedestrian Crossings

You must not stop or park on or near a marked crossing.



## Double Parking

You must not park alongside another parked vehicle.



## School Zone Speeding Offences

40km/h is the speed limit. Children are vulnerable in school zones.



## Seatbelts

The driver and all passengers must wear a seatbelt or correctly fitted child restraint.



Fines are current from 1 July 2021. Fines and demerit points are subject to change. This is not a complete list of school zone offences. Produced with the support of Mid-Western Regional Council, NSW Police and [Transport for NSW](http://TransportforNSW.gov.au). Source: [Transport for NSW](http://TransportforNSW.gov.au).



# School zones: understanding the rules

Children are small, harder to see, behave unpredictably and are extremely vulnerable.

They need you to take extra care when driving and parking around school zones.

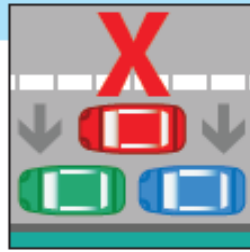
## PLEASE CHOOSE SAFETY OVER CONVENIENCE

To help understand school zone traffic rules, refer below to our quick reference guide.

### DOUBLE PARKING

You must not stop on the road alongside a car that is parked at anytime.

Fine: exceeds \$362  
Demerit points: 2



### NO PARKING

You have two minutes to drop-off or pick-up and must stay within three metres of your vehicle.

If no spaces are available you cannot queue on the road way or in any other zones while waiting for a space. You will need to drive away and park elsewhere, only returning when there is space to pull up.

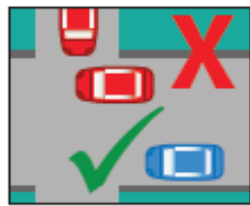
Fine: exceeds \$201  
Demerit points: 2



### FOOTPATH, DRIVEWAY OR NATURE STRIP

You must not stop across a driveway, footpath and nature strip for any reason.

Fine: exceeds \$362  
Demerit points: 2



### NO STOPPING

You cannot stop in a no stopping zone for any reason (including queuing or waiting for a space).

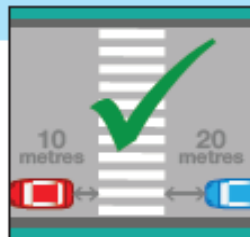
Fine: exceeds \$362  
Demerit points: 2



### PEDESTRIAN CROSSING

You must not stop on or within 20 metres before a pedestrian crossing or 10 metres after a crossing (unless a sign allows you to park there).

Fine: exceeds \$481  
Demerit points: 2



### BUS ZONE

You must not stop or park in a bus zone for any reason (including queuing or waiting for a space) unless you are driving a bus.

Fine: exceeds \$362  
Demerit points: 2



### SPEEDING

40km/h school zones are in force on all days which are not a weekend, a public holiday or a publicly notified school holiday for government schools. School zone days include school development days, also known as student-free days.

Fine: maximum penalty \$3,996  
Demerit points: +7



### PEDESTRIANS

#### STOP

one step back from the kerb

#### LOOK

for traffic to your right, left and right again

#### LISTEN

for the sounds of approaching traffic

#### THINK

whether it is safe to cross

Information effective at 1 July 2022 and subject to change.

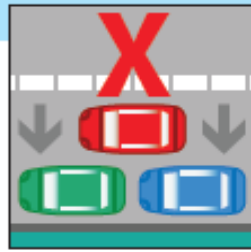
# 学校地带： 交通安全法规须知

儿童很小，很难看到，行为无法预测，是非常脆弱的。当您在学校地带行驶或者停车时，请特别注意儿童。

**请不要为了一时方便而忽略了交通安全。**  
为了帮助您了解学校地带的交通规则，请参阅我们的快速参考指南。

## 双行停车

任何时候您都不能在路上已停放的车辆旁边再停车。  
罚款：超过\$362  
扣分：2分



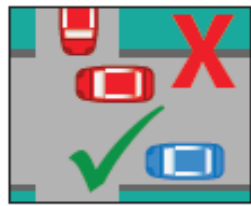
## 禁止泊车

您有两分钟接送孩子并且您必须保持在距离您的汽车的3米之内。如果路边没有位置可以停车，您不能在道路中或者任何其他路段滞留排队等待车位。您必须开车离开并停在别处，直到有空位了才可以返回。  
罚款：超过\$201  
扣分：2分



## 人行道，行车道，绿化隔离带

严禁以任何原因在人行道，行车道和绿化隔离带停车。  
罚款：超过\$362  
扣分：2分



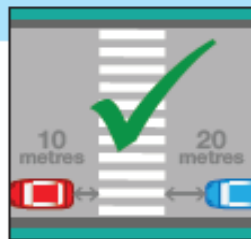
## 禁止暂停

严禁以任何原因在禁止停留区段滞留（包括排队等待停车位）。  
罚款：超过\$362  
扣分：2分



## 人行横道

在人行横道前20米或后10米范围内不得停车（除非有停车标志允许在此停车）。  
罚款：超过\$481  
扣分：2分



## 公共汽车停车地带

除非您驾驶的是公共汽车，否则严禁以任何原因在公共汽车停车地带停车（包括排队等待停车位）。  
罚款：超过\$362  
扣分：2分



## 超速

学校周围时速限制为40公里/小时在除了周末，公共假日以及公立学校的学校假期以外的所有日期都有效。学校地带限速的日期包括学校发展日(无学生日)。  
罚款：最高罚款\$3,996  
扣分：7分以上



## 行人

**停**

与路边保持至少一步的安全距离

**看**

观察行驶车辆，右边，左边，然后再右边。

**听**

留心听车辆驶近的声音

**想**

想一想是否可以安全通过

信息于2022年7月1日生效，如有变更，随时更改。



# DID YOU KNOW?

---

In NSW, it is illegal to do a U-turn across an unbroken centre line, even in a school zone.

Penalty: \$349 & 3 demerit points



## U-turns in School Zones

Did you know that it is illegal to do a U-turn across an unbroken line in the centre of a road? Unbroken lines in the centre of a road guide drivers and are an important road safety feature, especially in school zones.

You might see unbroken lines in the centre of the road near pedestrian crossings and refuges, approaches to intersections and places where sight lines are restricted.

By completing an illegal U-turn, you are putting the school community at risk of injury or worse. Penalties and fines apply.

# NO PARKING

Signs like these are displayed within your school zone. Make sure you read the signs carefully before you move away from your vehicle as some 'No Parking' signs may have time restrictions associated with them. Council Rangers and NSW Police actively patrol school zones, especially during drop-off and pick-up time periods. Make the right choice and keep our students safe.

## DID YOU KNOW?

You can stop in a **NO PARKING** zone for a maximum of 2 mins. You must remain inside or within 3m of your vehicle. Penalties apply.

If there are no spaces available, you'll need to drive away and park elsewhere or return when there is space available.





# Message from the Office

When making a payment online you can pay up to 3 DAYS before the due date of the payment. This is due to online transactions taking 48 hours to process.

Other payment methods such as cash or cheque can also be sent to the front office and placed in the blue box labelled "**School Post**".

Please note that we do not accept online payment for uniform or canteen orders. Please see the uniform or canteen order form for payment details.

## **Permission Notes**

If you have more than one child we need to have a note for each child, not all on one note please.

## **Change of Contact/Address details**

Please inform the office immediately if you have changed your contact or address details, so we can contact you in case of an emergency.

## **Bicycle and Scooter Guidelines**

If you give permission for your child to ride a bicycle or scooter to and/or from school and store it on the school grounds, please carefully read and sign the '**Bicycle and Scooter Guidelines**' document (obtained from the Front Office). These signed forms are to be returned to the office. Once we have received the signed documentation, the school will record that your child has permission from you to ride to school. Please see the office for details.



# Concord Public School on Twitter



Follow

## Concord PS

@ConcordPS

Facta Non Verba Deeds not Words

 Joined September 2017

**63** Following **248** Followers

**Are you aware that we are on Twitter?  
Follow us and see what is happening at Concord Public School**

## Concord Public School

66 Burwood Road, Concord NSW 2137

Email: [concord-p.school@det.nsw.edu.au](mailto:concord-p.school@det.nsw.edu.au)

Website: [www.concord-p.schools.nsw.edu.au](http://www.concord-p.schools.nsw.edu.au)

Ph: 02 9744 8427