



The Facta

Deeds Not Words Facta

Non Verba

Term 4 – Week 10 (16th December 2022)



Dates for the Diary

DECEMBER 2022		FEBRUARY 2023	
16 December	Last day for students	6 February	Kindy begin
JANUARY 2023			
27 January & 30 January	School Development Day		
31 January	Years 1-6 students start		



MERRY CHRISTMAS





Principal's Message



Dear Parents and Carers,

Just like that, another year has come to an end. Like every year, we say goodbye to old friends, families and colleagues as they begin their new chapter and embark on new adventures. As I do at the close of every year, I'd like to share my Presentation Day speech below.....

Boys and girls, parents, carers, grandparents, friends, teachers and staff, welcome to our Annual Presentation Day.

This is our very first Presentation Day where we get the opportunity to celebrate outside amongst our beautiful surroundings, under the sun. And how lucky are we to be surrounded by so many trees and lush green grounds – features that are so unique to our school.

As I do every year on Presentation Day, I'd like to take this opportunity to thank you all and acknowledge our tremendous school community.

Parents and carers, seeing you walk through the school gates after so long was truly a highlight this year. Our face-to-face meetings, Grandfriends' Day and our recent Art Exhibition truly reminded us all just how much we value human connections and the importance of person-to-person interactions. Thank you for your continued support, the faith you have in us as educators and entrusting us with your child's education each and every day. I know that when I say this, I speak on behalf of all our teachers, that being part of your children's lives is an enormous privilege.

Boys and girls, last weekend I read every single student's Semester 2 report. It is something that I enjoy doing immensely, and it is one of my favourite things to do as Principal. Your teachers have spent many hours putting your report together, so here is some advice from me. When you get your report, don't just look at the things that you can't do, but concentrate on what you have achieved. It might be that you are doing better in reading or that you finally understand how decimals and fractions work, or it might even be that you finally have the courage to do your topic talks. Whatever it is, take something away that you are super proud of, and share it with your mum & dad or a special family member. Then look at an area that you can do better in. This doesn't mean that you've failed. It means that you now have a new goal for 2023. We all have goals.....your teachers have goals & Ms Vountoulas has goals, too. It's how we learn new skills & knowledge.

Year 6, you are in your final weeks of primary school and you are about to embark on a new and exciting adventure called high school.

But when you walk out of the school gate that final time, take one last look over your shoulder.....look into the school grounds and focus on what you have achieved and what you have experienced whilst at Concord Public School.

- Friendships that will last a lifetime – you only have to look beside you right now. Who are you sitting next to? No doubt, a cherished friend.

Principal's Message, continued

- Wonderful teachers that cared and nurtured your wellbeing and education over the last 7 years
- And parents and carers who were right by your side from that very first day you walked into the school, holding your hand nervously and calming your nerves. Parents and carers who never gave up on you, through your triumphs and your challenges.

Good luck and we wish you all well!

I'd like to thank and acknowledge several staff members who won't be with us next year.

Firstly, thank you to Mrs Sue Makay. Mrs Makay will be moving to Murray Farm Public School next year. She has been with us for 18 months, caring for our students and working alongside Mrs Posavac in the office. We thank you for your contributions to our school and we wish you well as you start in your new role. We welcome back Mrs Betty Annetta, who returns from Croydon Public School.

Secondly, I'd like to wish Ms El-Hage the very best of luck as she moves to Croydon Public School as the Deputy Principal for 12 months. Congratulations on your new appointment, Ms El-Hage and we wish you well as you start in your new role.

Thirdly, thank you to our school psychologist, Mrs Christiana Savas. Mrs Savas has been with our school, supporting students and families for the last 12 months. We thank you for your commitment to our school and we wish you all the very best of luck in your future endeavours.

And finally, you would all be aware that Mrs Coco has decided to take the great leap into retirement next year. So save your tissues and hankies for now, everyone! We will get the opportunity to thank and honour Mrs Coco at her Farewell Assembly, next Tuesday 13th December, right here under the cola at 9:15am. Mrs Coco, the staff and the students would love for you to join us.

And lastly, I'd like to thank our teachers and our staff. I know it's a cliché to say that I work alongside the best staff in the state. But that is how I truly feel. I see, firsthand, the long hours that they put into their work, I see firsthand their commitment, and I see firsthand how nothing is ever too hard for them when it comes to their students. I know I may not say this often enough, teachers and staff, but I feel incredibly lucky to work with each and every one of you. You all bring such special and unique qualities to our wonderful school.

And to conclude, enjoy his special day and over the school holidays, cherish the moments with those that are special to you.

Merry Christmas and happy holidays to you all. Stay happy, stay safe and stay well.



Anna Vountoulas
Principal

Goodbye Mrs Coco



Mrs Coco began her career in 1984 as a young teacher at Wiley Park Public School. From there, she moved to St Jerome's in Punchbowl, then to Concord West Public School, Strathfield South Public School and finally she arrived at Concord Public School in 2011, and how lucky were we!

At Concord, she has led and implemented key literacy programs, led and implemented key wellbeing programs, and she has been relieving Principal on numerous occasions. She has mentored countless young and beginning teachers and mentored many aspiring leaders.



So what are the words & phrases that come to my mind when I think of Mrs Coco????

- She makes time for everyone
- She listens with compassion
- She is skilled and talented in so many areas
- She is knowledgeable
- Loyal
- Hardworking
- Patient
- Resilient
- Strong
- Friendly
- Fearless
- Confident
- Approachable
- Caring



And the list goes on.

But without a doubt, nothing is ever too hard for her. If you go to Mrs Coco with a problem, she always has a solution. She doesn't just help you come up with the solution, she also helps you and supports you through the problem.

Mrs Coco has touched the lives of every family that has walked through our doors. She is the face of the school in many ways and our go-to person for staff, parents and students.

On behalf of the school community, we thank you for your dedication to public education, and we thank you for all that you have done for our school.





Mrs Coco, on Monday, when you shut the door to your office for the final time, and when you drive through the gates for the very last time, feel proud of what you leave behind. Don't look back in sadness. But look back knowing that you leave a legacy.....a legacy of kindness, care and compassion that has touched every single member of our school community. A legacy that will inspire and aspire those that will follow you.

Thank you from the students and staff of Concord Public School.



Planning for 2023

Dear Parents/Carers,

We need assistance in our planning for next year. The school's staffing entitlements and funding are dependent upon student population at the start of 2023.

If you are moving or going on an extended family holiday and your child/ren will not be starting at the commencement of the new school year (**on Tuesday, 31st January 2023**), please notify the school office as soon as possible, preferably in writing or via the school's email address concord-p.school@det.nsw.edu.au

Thank you!

Principal's Awards / Pennant Process



Three Class Awards = 1 Principal's Award

Three Principal's Awards = 1 Principal's Pennant



Note: Class Awards and/or Principal's Awards must be handed to the front office 2 days prior to the date of Assembly

Kindergarten Enrolments - 2023

We are currently taking enrolments for our kindergarten classes next year – 2023.

If you or someone you know would like more information about our school or have a child ready to commence Kindergarten in 2023, please contact the school on:

Phone: 9744-8427 or 9744-8452

Email: concord-p.school@det.nsw.edu.au

We are looking forward to welcoming new children and families to our school.



Burwood Rotary Award



Congratulations...

Female Recipient - Charlotte Luu (5/6S)

Responsible, respected and kind. These are three perfect words to describe Charlotte Luu. Charlotte has built her positive reputation with teachers and fellow peers by always displaying her welcoming smile, being trustworthy and consistently supporting others. She always seeks to help, nurture, and guide her peers, and has developed many positive relationships with a range of students throughout the school. The staff at Concord Public School admire these qualities in Charlotte and believe she is an exemplary role model to the entire school community.

Male Recipient – Joonsu Shin (6Z)

Joonsu Shin is a humble student filled with utmost compassion who constantly considers the needs of others before his own. He has developed and maintained a range of positive relationships over his schooling years and has consistently modelled respectful behaviour from day one. Joonsu's maturity and responsibility shown towards his leadership role as a Technology Leader is highly admired. His genuine kindness and willingness to go out of his way to support all members of the Concord Public School Community; both his peers and teachers, should be commended.

Congratulations Mr Malcolm Buchan, recipient of the Metropolitan South Performance Network Award for the Strathfield Principals' Network



Without a doubt, Mr Buchan has displayed an unwavering commitment to the school for over 9 years. During this time, he has worked alongside staff and community members as President of the P&C, ensuring that the needs of the school and the students are at the forefront of planning and resource allocation. Concord Public School has been fortunate to capitalise on Mr Buchan's creativity, resonating in the school's Harmony Garden where he contributed to designs and the building of the garden. Congratulations and thank you, Mr Buchan. Our community is most fortunate to have you!

Congratulations Mr Mrs Eva O'Connell, recipient of the Metropolitan South Performance Network Award for the Strathfield Principals' Network



Mrs O'Connell has been an active member of our school community for over 8 years. She has been a member of the P&C and has volunteered many hours of her time during school and community events. Mrs O'Connell is always there to support the school and the community in any way she can, putting the needs of the school and the students first. Thank you, Mrs O'Connell for your commitment and positivity, and congratulations on receiving a Metropolitan South Performance Network Award.

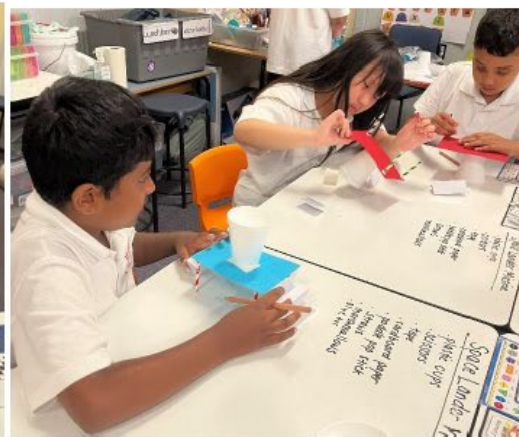


Inclusive Classes

Week 9 STREAM



During Week 9 this term Miss Asli inspired us to continue to strengthen our knowledge of the solar system. This week the students made an International Space Station. We even managed to test it out with a marshmallow or two! Check out the great results.





Inclusive Classes

Birthdays Galore

December was filled with wonderful birthday celebrations in the Inclusive Classes. Happy birthday to Aaruran, Joel, Miss Ann, Edmon and Vasili! We hope you all have a fabulous birthday and thank you for bringing in lots of special treats to celebrate your special day with us.



Farewell Prieyan

We would like to say a massive 'farewell' to Prieyan. Prieyan has been a special friend to all the students in the Inclusive Classes. We wish him all the best on his new journey to his new school in 2023. Thank you to the Mithilan family for all their support over the last few years.





Inclusive Classes

Thank you

Thank you to our whole school community for being so supportive of all our 21 students, families, and teaching team in the Inclusive Classes during 2022. Thank you to all the staff in the Inclusive Classes for their guidance and support throughout 2022. All the staff in the Inclusive Classes have set high expectations for all our students to ensure the provision of high-quality educational opportunities. Our staff have created open door environments which supported all our students to reach their full potential while developing social, emotional and life skills through inclusive practices. Thank you, Miss Asli, Miss Renae, Miss Katerina, Miss Gaya, Miss Ann and Miss Nina, I look forward to seeing what everyone will achieve individually and together in 2023.

Happy holidays to all our families in the Inclusive Classes. We wish you all a safe and relaxing break and we look forward to seeing you all in 2023 with some new friends in the Inclusive Team.



INTEREST GROUPS 2022

Thank you to all students who participated continuously throughout this year in our interest groups, we worked together collaboratively and had fun being creative.





Membership

Membership Interest Concord Public School

The *Concord Public School* P&C Association is a not-for-profit Organisation which is established to promote the interests of the school by bringing parents, citizens, students and teaching staff into close co-operation and to assist in providing facilities and equipment for the school and in promoting the recreation and welfare of the students at the school.

Membership of the *Concord Public School* P&C Association is open to all parents and guardians of pupils attending the school and to all citizens. *Concord Public School* P&C Association is always keen to welcome new members and particularly members who access or have an interest in the services provided by the P&C Association, such as our OOSH and the Canteen and Uniform Shops.

Meetings are held from time to time TBA each term. *Concord Public School* P&C Association operates sub-committees where your contribution would be greatly appreciated. Annual membership is \$2 and entitles you to be involved in the decision making of *Concord Public School* P&C Association. When you become a financial member, you agree to follow the Constitution, by-laws, Code of Conduct, Policies, Procedures and sub-committee rules as adopted by the *Concord Public School* P&C Association, copies of these materials are available from the *Concord Public School* P&C Association Secretary at each meeting of the P&C Association. You are recognised as a financial member of the *Concord Public School* P&C Association after the meeting closes at which you submit your payment. The Treasurer shall issue you a receipt within 14 days for this payment, you should retain the receipt for the current P&C Association year as proof of your membership.

If you are interested in becoming a member, please complete the form below and bring it with you to the next meeting of the *Concord Public School* P&C Association. If you are unable to attend the next meeting but wish to become a member, please submit this form and payment to the Treasurer via the school front Office or as further instructed.



Membership

FULL
NAME:

*Please print
clearly*

SCHOOL COMMUNITY MEMBER

TYPE:

Parent

Citizen

Please tick

CONTACT PHONE NUMBER:

EMAIL ADDRESS:

For meeting notices and updates

I include a payment of \$2 to become a financial member of the *Concord Public School P&C Association*. I acknowledge that I am aware that I agree to follow the Constitution, by-laws, Code of Conduct, policies, procedures and sub-committee rules as adopted by the *Concord Public School P&C Association*.

SIGNED

DATE

Dear Parents and Carers,

As we prepare for another year of learning in 2023, you can now apply for the Premier's Back to School NSW program, offering \$150 worth of vouchers (3 x \$50 vouchers) to help pay for school supplies like school uniforms, shoes, bags, textbooks and stationery.

Every primary and secondary school student in NSW is eligible for the vouchers.

Please read this/the attached letter from the Premier about the program and the vouchers.

You can apply for and access your vouchers in your MyServiceNSW account, in the Service NSW app, by calling Service NSW on 137788 or by visiting your local [Service Centre](#) [External link](#).

To be eligible, your child needs to be a NSW resident and enrolled in a NSW primary or secondary school in 2023.

For more information, visit the [Service NSW website](#) [External link](#).





Transport Community Forum



Do you want to hear about Transport projects in your area? The Transport Community Forum is your opportunity to learn about and discuss projects in the Inner West, Canada Bay, Strathfield, Burwood and Bayside Council areas in an interactive online session with our team and delivery partners.



Scan the QR code to learn more and sign up for updates



Contact Us

projects@transport.nsw.gov.au

caportal.com.au/tfnsw/inner-west



Sydney Trains

Burwood Road Rail Bridge maintenance works

Friday 16 December to Monday 19 December 2022

What we're doing

Sydney Trains is undertaking improvement works at Burwood Road Rail Bridge at Burwood Station from Friday 16 December to Monday 19 December. **Burwood Road will be temporarily closed to traffic, between Railway Parade and Railway Crescent nightly from 7pm to 9am.**

The works include: installation of scaffolding to road level from outer girders, steel repair, concrete repair, blast and paint within track level and interface to road level.

Please note that abrasive blasting is noisy work. Due to time constraints for our weekend maintenance works, the abrasive blasting work is scheduled to occur between 10am and 8pm on Saturday 17 December 2022.

We understand this work may have an impact on you and we appreciate your patience and understanding.

How this affects you

Burwood Railway Station access

From 10pm on Friday 16 December to 4am on Monday 19 December 2022, sections of the footpath to access Burwood Station will be closed.

- Temporary pedestrian detours will be in place on Burwood Road between Deane Street, Railway Crescent and Railway Parade.
- Follow the signs for the pedestrian detour and directions from the traffic management team.
- Pedestrian access to Burwood Railway Station is available throughout construction.
- Please allow for additional travel time to get to the Burwood Station entrance.

Traffic and road closures

- Burwood Road, between Railway Parade and Railway Crescent, will be temporarily closed to traffic on the following dates:
 - **From 7pm Friday 16 December to 9am Saturday 17 December 2022**
 - **From 7pm Saturday 17 December to 9am Sunday 18 December 2022**
 - **From 7pm Sunday 18 December to 4:30am Monday 19 December 2022**
- Traffic detours will be via Wentworth Road and Shaftesbury Road. Please follow detour signage. Please refer to the map below.
- Street parking on Railway Parade and Deane Street be limited and are shown on the map below.
- Traffic diversion and detours will be implemented, and traffic controllers will be on duty throughout the works to assist motorists and pedestrians. Please refer to the map on page 3.



Visit transportnsw.info

Sydney Trains

Changes to bus routes

- Bus stops and routes operating from Burwood Road will change during construction. Buses will replace trains during these works. They will operate along Railway Parade.
- Traffic control will be on duty to assist motorists and pedestrians.
- Please allow additional travel time and follow detour directions and signage.

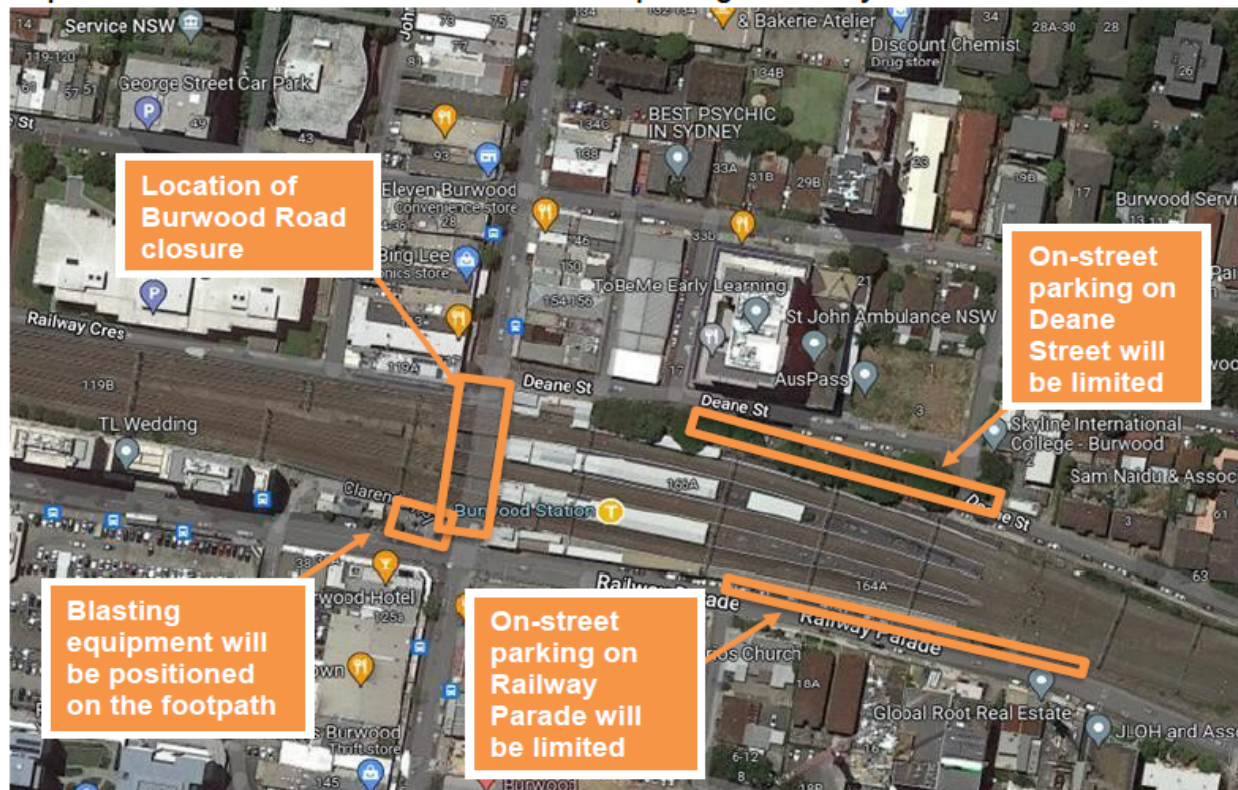
Noise

- These works will create additional noise at night and over the weekend.
- **Work will take place around the clock from 2am Saturday 17 December until 11pm Sunday 18 December.**
- **Abrasive blasting equipment will be positioned on the footpath on the western side of the Bridge.**
- **Materials and equipment will be delivered via a diesel work train, which may idle for extended periods.**
- We will select low-noise compressors and equipment where low-noise alternatives are available.
- Equipment may be delivered to the worksite outside the above working hours. Some deliveries may occur at night due to daytime travel restrictions on large vehicles.
- Finishing works may take place following this period, including the removal of equipment.

We apologise for any inconvenience and thank you for your cooperation during these essential works.

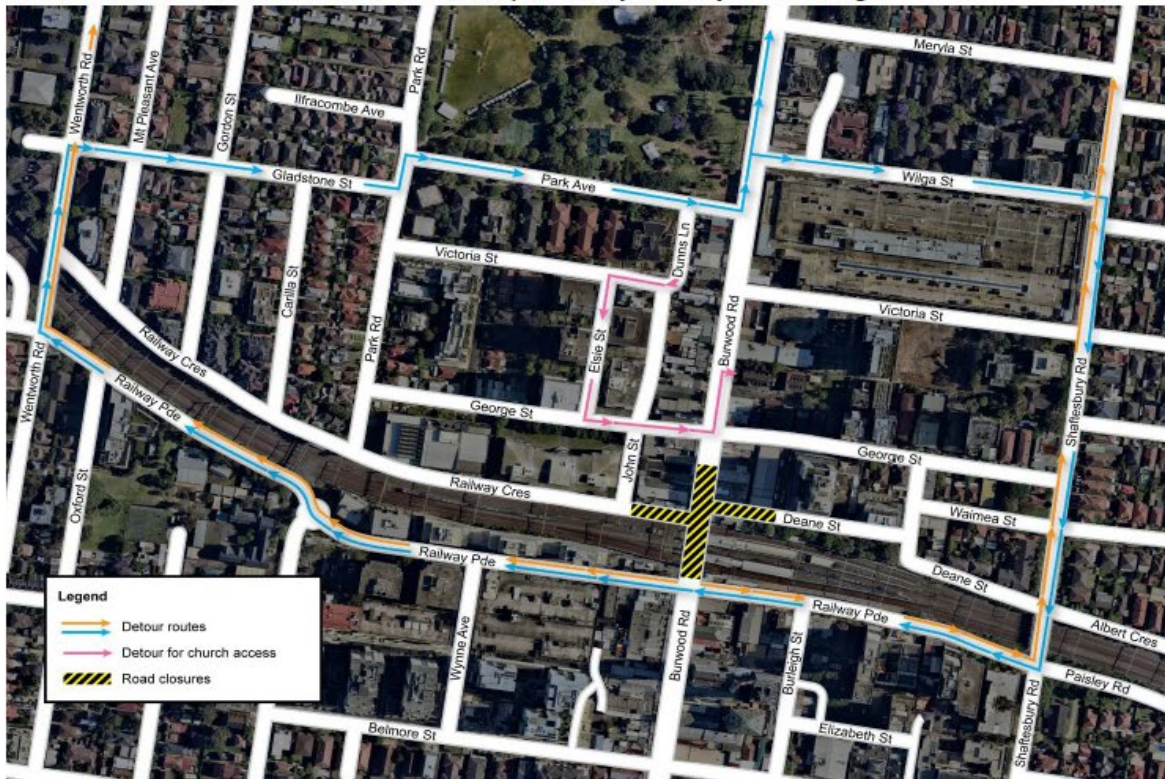
Further information

Map 1: Location of construction zone and limited parking availability



Sydney Trains

Map 2: Traffic diversion and detours under Burwood Road rail bridge from 16 to 19 December 2022
Please note the scheduled traffic diversion plans may be subject to change



All information is correct at the time of printing and may be subject to change. Visit transportnsw.info regularly for service change updates.

Contact us

Project Information line: **1800 684 490**

Email: projects@transport.nsw.gov.au

Website: transport.nsw.gov.au/sydneytraincommunity

To report environmental concerns (24 hours) 1300 656 999



Visit transportnsw.info

Sydney Trains

Burwood Road Rail Bridge maintenance works

Monday 26 December 2022 to Monday 9 January 2023

What we're doing

Sydney Trains is undertaking improvement works at Burwood Road Rail Bridge at Burwood Station from Monday 26 December 2022 to Monday 9 January 2023. **Burwood Road will be temporarily closed to traffic, between Railway Parade and Railway Crescent for this period.**

The improvement works include: the installation of scaffolding to road level from outer girders, steel repair, concrete repair, and blasting and painting of steelwork. Pedestrian access to Burwood Station and businesses will be available via an enclosed walkway. Please follow directions from traffic controllers and wayfinding signage.

Please note that abrasive blasting is noisy work.

How this affects you

Burwood Railway Station access

From 10pm on Monday 26 December 2022 to 4am on Monday 9 January 2023, sections of the footpath to access Burwood Station will be closed.

- Pedestrian access to Burwood Station and businesses will be available via an enclosed walkway.
- Temporary pedestrian detours will be in place on Burwood Road between Deane Street, Railway Crescent and Railway Parade.
- Follow the signs for the pedestrian detour and directions from the traffic management team.
- Please allow for additional travel time to get to the Burwood Station entrance.

Traffic and road closures

Burwood Road, between Railway Parade and Railway Crescent, will be temporarily closed to traffic from 10pm on Monday 26 December 2022 to 4am on Monday 9 January 2023.

- Street parking on Railway Parade and Deane Street be limited and a special events clearway will be in place on Railway Parade between Burwood Road and Shaftesbury Road. Please refer to the map on page 2.
- Special event clearways will operate from 6am Tuesday 27 December 2022 to 6am Monday 9 January 2023 on the southern side of Railway Parade, between Burwood Rd and Shaftesbury Rd.
- Special event clearways are strict no-parking zones and apply to local residents and Mobility Scheme Parking Permit holders. Vehicles left in clearways will be towed and a fee applies.
- Traffic diversion and detours will be implemented, and traffic controllers will be on duty throughout the works to assist motorists and pedestrians. Please refer to the map on page 3.



Visit transportnsw.info

Sydney Trains

Changes to bus routes

- Bus stops and routes operating from Burwood Road will change during construction.
- Traffic control will be on duty to assist motorists and pedestrians.
- Please allow additional travel time and follow detour directions and signage.

Noise

- These works will create additional noise throughout the day and at night.
- Work will take place around the clock from 10pm on Monday 26 December 2022 until 4am on Monday 9 January 2023.
- Abrasive blasting equipment will be positioned on Railway Crescent on the eastern side of the Bridge.
- We will select low-noise compressors and equipment where low-noise alternatives are available.
- Equipment may be delivered to the worksite outside the above working hours. Some deliveries may occur at night due to daytime travel restrictions on large vehicles.
- Finishing works may take place following this period, including the removal of equipment.

We apologise for any inconvenience and thank you for your cooperation during these essential works.

Further information

Map 1: Location of construction zone and limited parking availability



Sydney Trains

Map 2: Traffic diversion and detours under Burwood Road rail bridge

Please note the scheduled traffic diversion plans may be subject to change



Contact us

Project Information line: **1800 684 490**

Email: projects@transport.nsw.gov.au

Website: transport.nsw.gov.au/sydneytraincommunity

To report environmental concerns (24 hours) 1300 656 999

*All information is correct at the time of printing and may be subject to change.
Visit: transport.nsw.gov.au/sydneytraincommunity for project updates*



Visit transportnsw.info

CHOOSING A HELMET WHEN RIDING A BICYCLE OR SCOOTER

Always wear a helmet when riding a bicycle or a scooter. Helmets greatly reduce the risk of head injuries. In NSW, riders including children are required by law to wear an approved helmet.

When choosing the right helmet for your child, consider the following:

- Always choose an approved helmet that carries the Australian and New Zealand Standard logo. This is often displayed as a sticker on the inside of a helmet.
- Make sure the helmet is the right size. It should be comfortable and not too tight or too loose.
- Check to see if you can place two fingers above your child's eyebrows to the bottom of the helmet. The position of where the helmet sits on your child's head is important.
- The under-chin strap should be correctly adjusted, not twisted, and always buckled securely. There should be a one finger gap between the strap and the chin.
- Pick a helmet with a bright colour so it can be easily seen. Have your child help select their helmet colour. If you let your child have a say, chances are they will be more likely to wear it.
- Never wear a damaged helmet. If a helmet has been involved in an incident or dropped from a height, it should be replaced even with no visible damage. Check to see the condition of the shell and straps/buckle.

Help to promote safe riding behaviour by supervising your child. It's a great idea to talk with your child about the road environment including the traffic conditions, road signs and how and where they can ride safely.

By law, children under the age of 16 can ride on a footpath unless there is 'No Bicycles' signage installed. An adult rider who is supervising a bicycle rider under 16 may also ride with the young rider on the footpath.

For additional safety tips and information, please click the resources below:

- [City of Canada Bay – Bicycle safety](#)
- [Bicycle riders – road rules](#)
- [Helmets and safety gear](#)
- [Safe riding](#)
- [Shared paths](#)

CHOOSING A HELMET



In NSW, all riders including children are required by law to wear an approved helmet. When choosing a bicycle/scooter helmet consider the following:

- Does it have the Australian and New Zealand Standard logo?
- Is the size/position correct for my child's head?
- Can the strap be adjusted?
- Is it comfortable to wear?

 City of
Canada Bay

Our school has a new look **online payment page!**



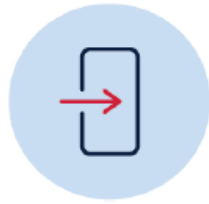
We're now accepting payment for Concord Public School via the school's website. New features allow you to access:



Anywhere, anytime from a mobile or tablet (as well as a desktop computer)



In a preferred language



Easily without needing to log on, register or enter a Student Registration Number.



Education



Our school has a new look **online payment page!**

We're now accepting payments for Concord Public School via the school's website. To make a payment, simply:



Visit our school website on your mobile, tablet or desktop computer



Select 'Make a payment' from the main page menu



Enter the required student, contact and payment details

Note: You are **NOT** required to provide the 9-digit Student Registration Number.



Check your email for a copy of the receipt of payment



Education

What to do when you need to see the school counsellor/psychologist



There may come a time when you or your child need to see the school counsellor/psychologist for advice or for a confidential matter. Our school psychologist is Christiana Savas. She is experienced in her field and comes with a wealth of knowledge and expertise.

Please find her details below:

Days at Concord PS - alternate Tuesdays and every Thursday

To make an appointment - call the school on 9744-8427 or 9744-8452

Or send an email to the school's email address concord-p.school@det.nsw.edu.au

If you require assistance on a day that Ms Savas does not work or require advice on a matter, please contact Mrs Coco (Learning Support Team Co-ordinator and Wellbeing Co-ordinator) or Ms Vountoulas.



ARE YOU WEARING THE CORRECT SCHOOL UNIFORM?

Summer Uniform (Term 1 and Term 4)



Sports Uniform (Friday's and on request)



Winter Uniform (Term 2 and Term 3)



Uniforms are available for order via your Quickcliq account



Thank you from your SRC Representatives



CONCORD OSHC

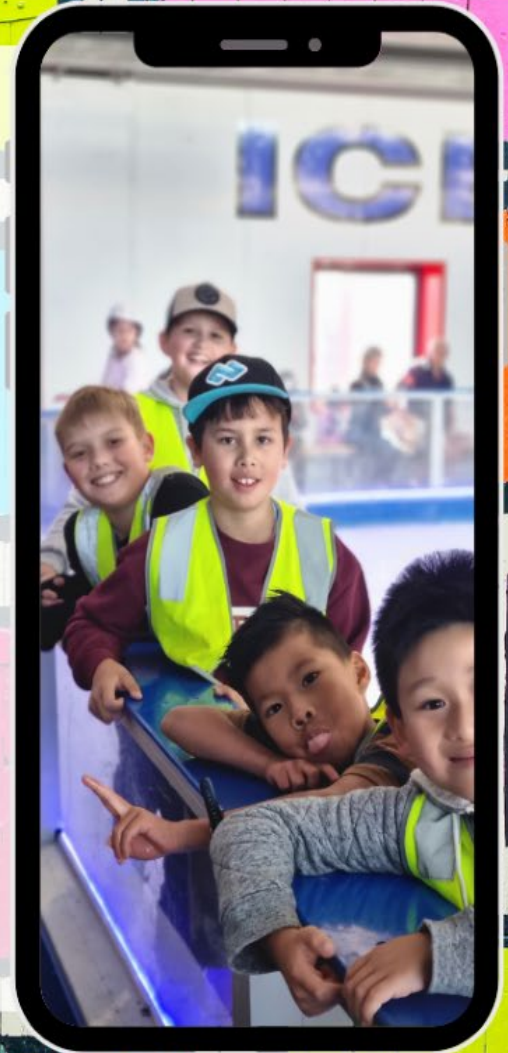


+61 449 734 922



info@concordoshc.com.au

Contact Us





Burwood Police Area Command

Burwood Police Station 02 9745 8499
Ashfield Police Station 02 9797 4099
Five Dock Police Station 02 8753 3599

Dear Members of the School Community

A **parking offence** is when you illegally park or stop a vehicle on a NSW public or private road. In most cases, you'll be issued a penalty notice which will require you to pay a fine.

For more **serious parking offences**, you may also have demerit points added to your licence. The most common offences include parking a vehicle:

- within 10m of an intersection with no traffic lights, unless a sign says you can
- incorrectly into a parallel or angle parking space
- in ticketed, metered or coupon parking space without paying
- in loading or no stopping zones
- for longer than the time allowed
- outside a marked parking space
- on a medium or nature strip
- in a mobility parking spot without a permit.

Serious parking offences include:

- parking offences in School zones
- parking in a mobility parking space without a permit
- using your mobility permit incorrectly or illegally
- parking on or near intersections with pedestrian crossings.

You can report these activities to POLICE using the following contacts.

ALL EMERGENCIES 000	Non-Emergency 131 444	CRIME STOPPERS 1800 333 000	Online Services www.portal.police.nsw.gov.au
<i>When Life is in danger</i>	<i>If you are a victim of crime other than life threatening</i>	<i>Report Information on criminals and criminal activity</i>	<i>Community Portal</i>

If you have any further enquiries, please do not hesitate to contact the Crime Prevention Officer, Senior Constables Latu on 02 9797 4050.

Kind Regards,

Crime Prevention Team

Ashfield Police Station | Burwood Police Area Command
| 14 Victoria Street, Ashfield NSW 2131
Email: latu1lis@police.nsw.gov.au | Direct Phone: 02 9797 4050 | Direct
Eaglenet: 48050 | Available Mon, Tues, Thurs, Fri 8am to 4.30pm



SCHOOL ZONE OFFENCES

SCHOOL ZONE

8 - 9^{am}
2^{pm} - 4^{pm}
SCHOOL DAYS

40

Children and young people are extremely vulnerable in the road environment. They need you to take extra care when driving and parking around schools. Penalties are greater for breaking the road rules in a school zone. Please choose safety over convenience.



No Parking

You have 2 minutes to drop-off or pick-up passengers, staying within 3 metres of your vehicle. Your vehicle must not block the flow of traffic or become a danger to other road users.

PENALTY
\$196
+2 DEMERIT POINTS



Mobile Phone Use

You must not use a hand held mobile phone while driving.

MAX PENALTY
\$469
+5 DEMERIT POINTS



No Stopping

You must not stop at any point on the road or kerb in the direction of the arrow.

PENALTY
\$352
+2 DEMERIT POINTS



Intersections

You must not stop on or within 20 metres of an intersection.

PENALTY
\$469
+2 DEMERIT POINTS



Bus Zone

You must not stop in a Bus Zone unless you are driving a bus.

PENALTY
\$352
+2 DEMERIT POINTS



Driveways

You must not stop on or across a driveway.

PENALTY
\$352
+2 DEMERIT POINTS



Pedestrian Crossings

You must not stop or park on or near a marked crossing.

PENALTY
\$469
+2 DEMERIT POINTS



Double Parking

You must not park alongside another parked vehicle.

PENALTY
\$352
+2 DEMERIT POINTS



School Zone Speeding Offences

40km/h is the speed limit. Children are vulnerable in school zones.

MAX PENALTY
\$3996
+7 DEMERIT POINTS



Seatbelts

The driver and all passengers must wear a seatbelt or correctly fitted child restraint.

PENALTY
\$352
+3 DEMERIT POINTS PER PERSON

Fines are current from 1 July 2021. Fines and demerit points are subject to change. This is not a complete list of school zone offences. Produced with the support of Mid-Western Regional Council, NSW Police and [Transport for NSW](http://TransportforNSW.gov.au). Source: [Transport for NSW](http://TransportforNSW.gov.au).

School zones: understanding the rules

Children are small, harder to see, behave unpredictably and are extremely vulnerable.

They need you to take extra care when driving and parking around school zones.

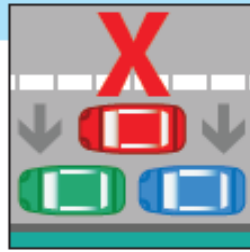
PLEASE CHOOSE SAFETY OVER CONVENIENCE

To help understand school zone traffic rules, refer below to our quick reference guide.

DOUBLE PARKING

You must not stop on the road alongside a car that is parked at anytime.

Fine: exceeds \$362
Demerit points: 2



NO PARKING

You have two minutes to drop-off or pick-up and must stay within three metres of your vehicle.

If no spaces are available you cannot queue on the road way or in any other zones while waiting for a space. You will need to drive away and park elsewhere, only returning when there is space to pull up.

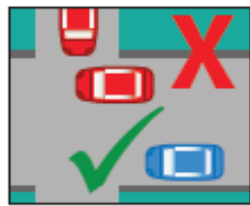
Fine: exceeds \$201
Demerit points: 2



FOOTPATH, DRIVEWAY OR NATURE STRIP

You must not stop across a driveway, footpath and nature strip for any reason.

Fine: exceeds \$362
Demerit points: 2



NO STOPPING

You cannot stop in a no stopping zone for any reason (including queuing or waiting for a space).

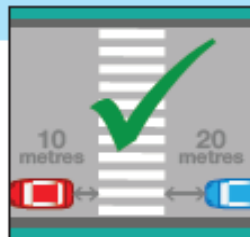
Fine: exceeds \$362
Demerit points: 2



PEDESTRIAN CROSSING

You must not stop on or within 20 metres before a pedestrian crossing or 10 metres after a crossing (unless a sign allows you to park there).

Fine: exceeds \$481
Demerit points: 2



BUS ZONE

You must not stop or park in a bus zone for any reason (including queuing or waiting for a space) unless you are driving a bus.

Fine: exceeds \$362
Demerit points: 2



SPEEDING

40km/h school zones are in force on all days which are not a weekend, a public holiday or a publicly notified school holiday for government schools. School zone days include school development days, also known as student-free days.

Fine: maximum penalty \$3,996
Demerit points: +7



PEDESTRIANS

STOP

one step back from the kerb

LOOK

for traffic to your right, left and right again

LISTEN

for the sounds of approaching traffic

THINK

whether it is safe to cross

Information effective at 1 July 2022 and subject to change.

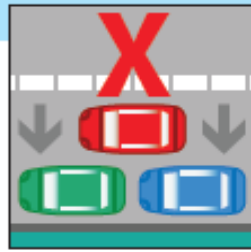
学校地带： 交通安全法规须知

儿童很小，很难看到，行为无法预测，是非常脆弱的。当您在学校地带行驶或者停车时，请特别注意儿童。

请不要为了一时方便而忽略了交通安全。为了帮助您了解学校地带的交通规则，请参阅我们的快速参考指南。

双行停车

任何时候您都不能在路上已停放的车辆旁边再停车。
罚款：超过\$362
扣分：2分



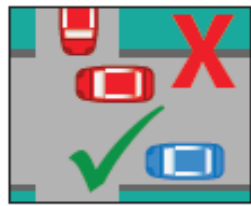
禁止泊车

您有两分钟接送孩子并且您必须保持在距离您的汽车的3米之内。如果路边没有位置可以停车，您不能在道路中或者任何其他路段滞留排队等待车位。您必须开车离开并停在别处，直到有空位了才可以返回。
罚款：超过\$201
扣分：2分



人行道，行车道，绿化隔离带

严禁以任何原因在人行道，行车道和绿化隔离带停车。
罚款：超过\$362
扣分：2分



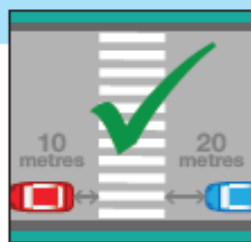
禁止暂停

严禁以任何原因在禁止停留区段滞留（包括排队等待停车位）。
罚款：超过\$362
扣分：2分



人行横道

在人行横道前20米或后10米范围内不得停车（除非有停车标志允许在此停车）。
罚款：超过\$481
扣分：2分



公共汽车停车地带

除非您驾驶的是公共汽车，否则严禁以任何原因在公共汽车停车地带停车（包括排队等待停车位）。
罚款：超过\$362
扣分：2分



超速

学校周围时速限制为40公里/小时在除了周末，公共假日以及公立学校的学校假期以外的所有日期都有效。学校地带限速的日期包括学校发展日(无学生日)。
罚款：最高罚款\$3,996
扣分：7分以上



行人

停

与路边保持至少一步的安全距离

看

观察行驶车辆，右边，左边，然后再右边。

听

留心听车辆驶近的声音

想

想一想是否可以安全通过

信息于2022年7月1日生效，如有变更，随时更改。

DID YOU KNOW?

In NSW, it is illegal to do a U-turn across an unbroken centre line, even in a school zone.

Penalty: \$349 & 3 demerit points



U-turns in School Zones

Did you know that it is illegal to do a U-turn across an unbroken line in the centre of a road? Unbroken lines in the centre of a road guide drivers and are an important road safety feature, especially in school zones.

You might see unbroken lines in the centre of the road near pedestrian crossings and refuges, approaches to intersections and places where sight lines are restricted.

By completing an illegal U-turn, you are putting the school community at risk of injury or worse. Penalties and fines apply.

NO PARKING

Signs like these are displayed within your school zone. Make sure you read the signs carefully before you move away from your vehicle as some 'No Parking' signs may have time restrictions associated with them. Council Rangers and NSW Police actively patrol school zones, especially during drop-off and pick-up time periods. Make the right choice and keep our students safe.

DID YOU KNOW?

You can stop in a **NO PARKING** zone for a maximum of 2 mins. You must remain inside or within 3m of your vehicle. Penalties apply.

If there are no spaces available, you'll need to drive away and park elsewhere or return when there is space available.



Message from the Office

When making a payment online you can pay up to 3 DAYS before the due date of the payment. This is due to online transactions taking 48 hours to process.

Other payment methods such as cash or cheque can also be sent to the front office and placed in the blue box labelled “**School Post**”.

Please note that we do not accept online payment for uniform or canteen orders. Please see the uniform or canteen order form for payment details.

Permission Notes

If you have more than one child we need to have a note for each child, not all on one note please.

Change of Contact/Address details

Please inform the office immediately if you have changed your contact or address details, so we can contact you in case of an emergency.

Bicycle and Scooter Guidelines

If you give permission for your child to ride a bicycle or scooter to and/or from school and store it on the school grounds, please carefully read and sign the ‘**Bicycle and Scooter Guidelines**’ document (obtained from the Front Office). These signed forms are to be returned to the office. Once we have received the signed documentation, the school will record that your child has permission from you to ride to school. Please see the office for details.



Concord Public School on Twitter



Follow

Concord PS

@ConcordPS

Facta Non Verba Deeds not Words

 Joined September 2017

63 Following **248** Followers

**Are you aware that we are on Twitter?
Follow us and see what is happening at Concord Public School**

Concord Public School

66 Burwood Road, Concord NSW 2137

Email: concord-p.school@det.nsw.edu.au

Website: www.concord-p.schools.nsw.edu.au

Ph: 02 9744 8427