



The Fecta

Deeds Not Words Fecta

Non Verba

Term 2 – Week 2 (30th April 2021)



Dates for the Diary

MAY		JUNE	
3 May	K-6 Zoom Assembly	7 June	Stage 1 Excursion - School House Museum
5 May	Multisport Athletic Program K-6	9 June	DANCEFEVER Athletics Program
10 May	Public Speaking Competition	14 June	Queen's Birthday
12 May	Multisport Athletic Program	16 June	DANCEFEVER Athletics Program
14 May	National Walk Safely to School Day	21 June	Wellbeing Week
19 May	Multisport Athletic Program		
20 May	Cut off for Awards to be received for next Zoom Assembly		
24 May	K-6 Zoom Assembly		
26 May	National Sorry Day		
26 May	Multisport Athletic Program K-6		

Principal's Message

Dear Parents and Carers,

Welcome back to our students and families to Term 2 and a very big welcome to our new students and their families that have joined the community of Concord! It was lovely to hear the excited voices of students in the playground on their first day back, when seeing their friends after their two week break.

I know that students have been discussing their learning goals for the term and are now working towards achieving them. To all our students, work hard, always do your best and tackle any challenges with an open mind and a growth mindset!

We have certainly had a busy start to the term already! We held our annual School Cross Country on Monday this week, and weren't we so lucky with the weather! These events cannot go ahead without the careful planning and organisation that is required for these events to be successful. I would like to thank Mr Crisafulli and the team of teachers for all the hard work over the last few weeks and a big thank you to all staff for making the day run so smoothly. Most importantly, I would like to congratulate all our students on their participation, enthusiasm and most of all for supporting and encouraging each other during the races. There were so many parents, carers and family members to support our students along the way. I was able to chat with many parents and the common feel was that it was wonderful to be able to be together for a whole school event, the first after such a long time.

On Tuesday we held our ANZAC Day commemorative service. It was a beautiful and special way to mark this important day. Thank you to Mr Thomas for your excellent organisation in preparing this for our school. Thank you also to our school captains and SRC representatives for your participation in making this a respectful and special commemorative service. Thank you to all the families that sent in flowers.

As we start to get into the colder months, all students are now starting to wear their winter uniform. I would like to give a special thank you to our parent volunteer, Ms Kassem who is here almost every day attending to uniform orders and supporting our new students /parents. Thank you Ms Kassem, we truly appreciate it. We would like to remind all parents and carers to label all jumpers and jackets, lunchboxes and drink bottles so we are able to reunite them with their owners.

Our school canteen is back! It's wonderful to see all our parent volunteers in the canteen attending to all the lunch and snack orders. Thank you Mrs O'Connell, our canteen coordinator and all the volunteers who give up their own time to provide our families with a school canteen.

During the school holidays more work was done on our side garden. A new fence along the back of the Gardiya Building was installed by Mr Buchan, Mr Hillsely and helpers. Thank you for your continued support in making our side garden something we are truly proud of!

Assembly for Term 2 starts next Monday, 3 May. A note with a Zoom link will be sent to all our families via our school app. Parents and carers of our award recipients will receive an invitation via email inviting you to attend our school assembly. A note regarding this was sent home last term. If you have any questions please call the school office.

Principal's Message, *continued*

Ms Vountoulas returned back to school today. Welcome back to Term 2 Ms Vountoulas!

We look forward to another busy and successful term. One of the best things about our school is the way we work alongside our parents and carers to support our students.

As always, thank you for your continued support in us as educators.

Kindest regards,

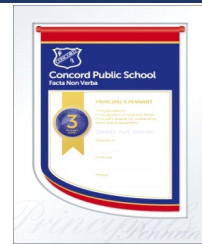
Mrs Coco

Relieving Principal

Student Awards

Congratulations

To the following students who have or will be receiving a Principal Award or Principal Pennant.



Principal's Awards:		Principal's Pennant:	
Aurora W – 3PA	Annalia G – 5/6S	Annalia G – 5/6S	
Ariella W – KG	Libby D – 1/2A Ryley M – 4Z	Jessica L – 4Z	
Tom V – 5/6S	Cyril B – 2T	Charlie W – 3PA	
Eva V – 4Z	Oscar L – 5/6S	Sam W – 5/6S	
David G – 5/6S	Mia S – 2T		
Ananya F – 1D	Ryley M – 4Z		
Jacqueline L – 3PA	Emmett B – 1D		
Jake M – 3PA	Sam W – 5/6S		
Eunice Y – 3/4M	Charlie W – 3PA		
Audrey C – 5/6S	Enrico S – 1D		
Jeshvik P – K/1D	Bianca M – 1/2A		
Ashton C – 4Z	Ryan H – 2T		
Sara A – 3PA	April H – KS		
Keira Y – 5M			
Sienna S – 4Z			

Awards Assembly Dates

Monday – 3rd May 2021 at 2:20pm

Monday – 24th May 2021 at 2:20pm

Monday – 21st June at 2:20pm

Principal's Awards/Pennants Process

Three Class Awards = 1 Principal's Award

Three Principal's Awards = 1 Principal's Pennant

Note: Class Awards and/or Principal's Awards must be handed to the front office 2 days prior to the date of Assembly.



ANZAC DAY

Service at CPS





Cross Country Carnival

Congratulations to all students on their enthusiastic participation in the Cross Country Carnival. Not only was the day held under sunny skies but it was also a fantastic welcome back to parents, carers and family members to our carnival events.

The first four placings in each of the 8 & 9 Years, 10 Years, 11 Years and 12 & 13 Years age groups will form the Concord Public School team to compete at the upcoming Western Suburbs PSSA Zone Cross Country Carnival.

AGE GROUP RESULTS

KINDERGARTEN		
Placing	Boys	Girls
1 st	Edward E	Kenza M
2 nd	Branko T	April H
3 rd	Mason M	Matilda S
4 th	Max D-W	Amelia I
5 th	Naite L	I B
6 th	PJ K	Ariella W
YEAR 1		
Placing	Boys	Girls
1 st	Jayden Y	Tahlia M
2 nd	Adam T	Mia N
3 rd	Isaac W	S P
4 th	Alex K	Isabella S
5 th	Leo B	A F
6 th	E B	Laraib K

YEAR 2		
Placing	Boys	Girls
1 st	Ethan J	Abigail T
2 nd	Ryan H	C B
3 rd	Jacobie B	Mia S
4 th	Hunter S	Beth A
5 th	Hammoudi H	Sophia S
6 th	Ibrahim O	Ava M
8 & 9 YEARS		
Placing	Boys	Girls
1 st	Jagger C	Matilda I
2 nd	Charlie W	Eunice Y
3 rd	Josh P	Sienna S
4 th	Alejandro B	Ivy M
5 th	Ben S S	Sarcha M
6 th	Marcus D	Jessica L

Cross Country, *continued*

10 YEARS		
Placing	Boys	Girls
1 st	Giuliano F	Jasmine T
2 nd	A T	Naomi T
3 rd	Carter B	Audrey C
4 th	W P	Evelyn T
5 th	Connor C	Ella G
6 th	Liam D	Charlotte L
11 YEARS		
Placing	Boys	Girls
1 st	Eilam O	Katrina L
2 nd	Chris Y	Lily A
3 rd	L T	Isidora T
4 th	Sam W	Sage M
5 th	Jihoon B	Gabriella G
6 th	Jordan F M	Hannah K
12 & 13 YEARS		
Placing	Boys	Girls
1 st	Archie M	Una G
2 nd	Hamish H	Sunny F
3 rd	C P	Autumn L
4 th	Harrison H	Jana Q
5 th	Judd B	Sophia C
6 th	Henry C	Madhuri Z

Year 5 Entry to an Opportunity Class in 2022

Applications for Year 5 entry to an opportunity class in 2022 will open on Tuesday, 20th April 2021. Parents and Carers will be able to apply from the website at that time.

<https://education.nsw.gov.au/public-schools/selective-high-school-and-opportunity-classes/year-5>

Parents and Carers must apply online by Friday, 7th May 2021 when applications close. This closing date will be strictly observed, except where extenuating circumstances are serious and well documented or where there may be a shortage of suitable candidates.

The Opportunity Class Placement Test will be held on Wednesday, 21st July 2021.



Concord Public School

66 Burwood Road, Concord NSW 2137 - P O Box 522, Concord NSW 2137

Telephone: (02) 9744 8427 or (02) 9744 8452 Fax: 9744 5187

Email: concord-p.school@det.nsw.edu.au

NAPLAN 2021

Dear Parents/Carers,

All students in Year 3 and Year 5 will sit NAPLAN beginning in Week 4. This year, we will be accessing the online assessment platform for all assessments, except Year 3 writing. Please see the schedule below, for more information.

NAPLAN is short for National Assessment Program – Literacy and Numeracy. NAPLAN is not intended to be a test that students prepare for, NAPLAN provides a snapshot of the literacy and numeracy skills your child has developed to date in comparison with same age peers across the country providing teachers and parents information to ensure appropriate progress and development for every student and focus for future teaching and learning for individual students.

For more information please access the following links;

<https://www.nap.edu.au/naplan/parent-carer-support>

<https://www.acara.edu.au/assessment/naplan>

NAPLAN Online test window

The NAPLAN Online test window is **nine days**, beginning on **Tuesday 11 May**. The tests need to be taken in a specific order.

Test	Anticipated sitting day at Concord PS*	Scheduling requirements	Duration	Test description
Writing	Tuesday 11 May	Year 3 students do a paper-based writing test Year 5 complete the writing assessment online	Year 3: 40 minutes Year 5: 42 minutes	Students are provided with a 'writing stimulus' (sometimes called a 'prompt' – an idea or topic) and asked to write a response in a particular genre (narrative or persuasive writing)
Reading	Wednesday 12 May	To be completed before the conventions of language test	Year 3: 45 minutes Year 5: 50 minutes	Students read a range of informative, imaginative and persuasive texts and then answer related questions
Conventions of language	Thursday 13 May	To be completed after the reading test	Year 3: 45 minutes Year 5: 45 minutes	This test assesses spelling, grammar and punctuation
Numeracy	Monday 17 May	To be completed after the conventions of language test	Year 3: 45 minutes Year 5: 50 minutes	This test assesses number and algebra, measurement and geometry, and statistics and probability

**Please note, these dates may change within the 9 day window*

If you have any questions or concerns, do not hesitate to contact the school.

Kind regards,

Mrs Soteriou
Rel. Assistant Principal

Mrs Coco
Rel. Principal

Compulsory School Attendance

Information for parents

Education for your child is important and regular attendance at school is essential for your child to achieve their educational best and increase their career and life options. NSW public schools work in partnership with parents to encourage and support regular attendance of children and young people. When your child attends school every day, learning becomes easier and your child will build and maintain friendships with other children.

What are my legal responsibilities?

Education in New South Wales is compulsory for all children between the ages of six years and below the minimum school leaving age. The *Education Act 1990* requires that parents ensure their children of compulsory school age are enrolled at, and regularly attend school, or, are registered with the Board of Studies, Teaching and Educational Standards for homeschooling.

Once enrolled, children are required to attend school each day it is open for students.

The importance of arriving on time

Arriving at school and class on time:

- Ensures that students do not miss out on important learning activities scheduled early in the day
- Helps students learn the importance of punctuality and routine
- Give students time to greet their friends before class
- Reduces classroom disruption

Lateness is recorded as a partial absence and must be explained by parents.

What if my child has to be away from school?

On occasion, your child may need to be absent from school. Justified reasons for student absences may include:

- being sick, or having an infectious disease
- having an unavoidable medical appointment
- being required to attend a recognised religious holiday
- exceptional or urgent family circumstance (e.g. attending a funeral)

Following an absence from school you must ensure that within 7 days you provide your child's school with a verbal or written explanation for the absence. However, if the school has not received an explanation from you within 2 days, the school may contact you to discuss the absence.

Principals may decline to accept an explanation that you have provided if they do not believe the absence is in the best interest of your child. In these circumstances your child's absence would be recorded as unjustified. When this happens the principal will discuss their decision with you and the reasons why.

Principals may request medical certificates or other documentation when frequent or long term absences are explained as being due to illness. Principals may also seek parental permission to speak with medical specialists to obtain information to collaboratively develop a health care plan to support your child. If the request is denied, the principal can record the absences as unjustified.

Travel

Families are encouraged to travel during school holidays. If travel during school term is necessary, discuss this with your child's school principal. An *Application for Extended Leave* may need to be completed. Absences relating to travel will be marked as leave on the roll and therefore contribute to your child's total absences for the year.

In some circumstances students may be eligible to enrol in distance education for travel periods over 50 school days. This should be discussed with your child's school principal.





My child won't go to school. What should I do?

You should contact the principal as soon as possible to discuss the issue and ask for help. Strategies to help improve attendance may include a referral to the school's learning and support team or linking your child with appropriate support networks. The principal may seek further support from the Home School Liaison Program to develop an Attendance Improvement Plan.

What might happen if my child continues to have unacceptable absences?

It is important to understand that the Department of Education and Communities may be required to take further action where children of compulsory school age have recurring numbers of unexplained or unjustified absences from school.

Some of the following actions may be undertaken:

- Compulsory Schooling Conferences

You may be asked, along with your child, to attend a Compulsory Schooling Conference. The conference will help to identify the supports your child may need to have in place so they attend school regularly. The school, parents and agencies will work together to develop an agreed plan (known as Undertakings) to support your child's attendance at school.

- Application to the Children's Court – Compulsory Schooling Order

If your child's attendance at school remains unsatisfactory the Department

may apply to the Children's Court for a *Compulsory Schooling Order*. The Children's Court magistrate may order a Compulsory Schooling Conference to be convened.

- Prosecution in the Local Court

School and Department staff remain committed to working in partnership with you to address the issues which are preventing your child's full participation at school. In circumstances where a breach of compulsory schooling orders occurs further action may be taken against a parent in the Local Court. The result of court action can be the imposition of a community service order or a fine.

What age can my child leave school?

All New South Wales students must complete Year 10 or its equivalent. After Year 10, and up until they reach 17 years of age, there are a range of flexible options for students to [complete their schooling](#).

Working in Partnership

The Department of Education and Communities recognises that working collaboratively with students and their families is the best way to support the regular attendance of students at school.

We look forward to working in partnership with you to support your child to fulfil their life opportunities.

If a student misses as little as 8 days in a school term, by the end of primary school they'll have missed over a year of school.

Further information regarding school attendance can be obtained from the following websites:

Policy, information and brochures:

Please visit the Department of Education's *Policy library*

The school leaving age:

Please visit the Department of Education's *Wellbeing and Learning* website

Do you need an interpreter?

Interpreting services are available on request, including for the hearing impaired. The Telephone Interpreter Service is available 24 hours a day, seven days a week on 131 450. You will not be charged for this service.

For further advice and questions contact your educational services team

T 131 536

Learning and Engagement

Student Engagement & Interagency Partnerships

T 9244 512

www.dec.nsw.gov.au

© February 2015

NSW Department of Education and Communities



School Operational Guidelines from Thursday 22nd April 2021

Dear Parents and Carers,

Welcome back to Term 2 to all our Concord Public School Families. We hope you all had a relaxing break with your children.

Detailed below is the our School Operational Guidelines as of Thursday 22nd April.

Drop-off and pick-up arrangements for years K-2 students

Drop-off: parents and carers are more than welcome to enter the school premises during drop-off. However, we advise that you do this as close to 9am as possible and leave the school premises promptly in order to avoid large gatherings on the school grounds. When on the school premises, please exercise the 1.5 metre rule between adults at all times.

Pick-up: **there are no changes to the current pick-up arrangements. Students in years K-2 will be dismissed at 2:55pm at their usual location in the playground.** Parents are most welcome on the premises. Though where possible, we ask that you enter the grounds as close to 2:55pm as possible to avoid large gatherings. Please remember to exercise the 1.5 metre rule between adults at all times. If you need to speak to your child's class teacher, please call the office to arrange a face-to-face interview or a phone call.

Drop-off and pick-up arrangements for students in the Inclusive Classes

Drop-off will be at the Sensory Garden near Salisbury Street. Please ensure that you enter the school premises as close to 9am as possible and leave promptly after drop-off. Pick-up will be at the Sensory Garden at **2:55pm**. Please meet your child in this area.

Drop-off and pick-up arrangements for years 3-6 students

There is no change to the dismissal time for our years 3-6 students. **Students in years 3-6 will be dismissed at 3pm.** Parents and carers are most welcome on the school premises. Though we encourage you to enter the school grounds close to 3pm. Where possible, please continue meeting your child at an agreed location outside the school premises to avoid congestion on the school premises during this busy time. When on the school grounds, please exercise the 1.5 metre rule between adults at all times. If you need to speak to your child's class teacher, please call the office to arrange a face-to-face interview or a phone call.

When entering the school premises

If you need to pick up your child for an appointment, drop something off or have an appointment with a teacher, please make your way to the office. You will need to sign in using the COVID Safe QR code posters and visitors' register. This is not required during drop-off and pick-up times.

Please note – if you are feeling unwell or have cold/flu-like symptoms, please do not enter the school premises.

Whole school community events

As specified in the Department of Education's guidelines, "Events held on school sites will need to limit guests based on the physical distancing requirements as per the [relevant square metre rules](#) [External link](#). Schools will need to invite guests based on the total number of people (this includes staff, students, parents & carers or visitors) who are able to be accommodated."

NSW Health also states, "Capacity must not exceed one customer per 2 square metres of publicly accessible space. Children count towards the capacity limit."

"Ceremonies may need to be held in sessions if capacity is difficult to manage or there is a large student cohort".

Whole school assemblies

As the 2 square metre rule also applies to the hall, this limits the number of parents and carers in this area during our assembly time. This term we will hold our school assemblies in the hall and to adhere to these guidelines, the only people in the hall will be the reward recipients, their parents/carers (if they chose to attend in person), the School Captains and the teachers involved in the assembly organisation/presentation. A note was sent via our School App last term with details on how parents/carers can attend this term's assemblies. I will attach this note for your reference.

I'd like to thank you all for your ongoing continued support during this time. Our Concord Community is a community we are very proud of!

Please do not hesitate in contacting the school if you require further clarification or support. Our contact details are listed below:

Phone: 9744-8427 / 9744-8452

Email: concord-p.school@det.nsw.edu.au

Kind regards,

Mina Coco

Relieving Principal

Concord Public School

A reminder – what to do if your child is unwell

Term 2 Operational Guidelines from the Department of Education - Advice for families

Updated 15 April 2021

We're working closely with the Australian Health Protection Principal Committee (AHPPC), NSW Health and other agencies to ensure our schools continue to operate in the safest ways possible in the COVID-19 environment.

Schools are operating full time while actively following health advice.

Schools continue to be safe, and operations are in line with Australian Health Protection Principal Committee (AHPPC) and NSW Health advice. All students should be learning on campus unless they are unwell or have a medical certificate to support their absence.

Activities permitted at school will be conducted in a way that is safe and appropriate in the current environment. Activities that remain on hold will be reviewed at regular intervals and will recommence when appropriate based on health and other relevant advice.

COVID Safe Check-in

From Term 1 2021, all NSW public schools use the Service NSW [COVID Safe Check-in](#)^{External link}.

Look for the COVID Safe QR code posters when you enter your child's school. Be sure to sign in at the school administration building according to your school's visitor guidelines.

Latest COVID-19 case locations in NSW

Students are reminded to remain vigilant and practise physical distancing and hygiene measures to ensure the safety and wellbeing of students and staff are maintained.

Check the [latest COVID-19 case locations in NSW](#)^{External link} and follow the recommended actions if you have been in a location where there may have been exposure to COVID-19. We encourage members of the community to monitor this site. Please follow the relevant health advice if you have been at any of the locations at the specified dates and times.

The locations along with the times and dates of identified cases can be found on the [NSW COVID-19 website](#)^{External link}.

There are more than 350 COVID-19 testing locations across NSW, many of which are open seven days a week.

To find your nearest clinic visit [COVID-19 testing clinics](#) or contact your GP.

School attendance

Students should be at school unless:

- they have a medical certificate which states that they are unable to return to school due to an ongoing medical condition and the expected timeframe
- they are currently unwell.

In accordance with [advice from NSW Health](#)^{External link}, parents and carers are reminded **NOT** to send children to school if they are unwell, even if they have the mildest flu-like symptoms.

NSW Health has requested that schools encourage anyone who is unwell or has even mild flu-like symptoms, to arrange to be tested through their local medical practitioner or one of the [COVID-19 clinics](#)^{External link}.

Students and staff with flu-like symptoms need to be tested and provide a copy of a negative COVID-19 test result and be symptom-free before being permitted to return to school.

Students who do not undertake a COVID-19 test will not be permitted to return to school for a 10-day period. Additionally, they must be symptom-free for at least 3 days prior to returning to school.

Students who have seasonal allergic rhinitis or another condition that presents similarly to flu-like symptoms are still required to get tested for COVID-19 and return a negative test result. Where their symptoms continue beyond 10 days, students should provide documentation from their GP confirming their symptoms are typical for their condition. If the student develops new or changed symptoms, they should get tested for COVID-19. Find more information about [COVID-19 symptoms](#)^{External link}.

COVID-19 testing for students with complex health or disability may be challenging. In these situations, schools will ask the parent or carer to have their child assessed by their medical practitioner. Where a medical practitioner determines that a COVID-19 test is not required, documentation must be provided to the school to confirm that the student does not have symptoms that warrant a COVID-19 test. The certificate must also indicate that the student is able to return to school.

All schools will be vigilant when implementing infection control, physical distancing and personal hygiene protocols to protect the health and safety of students and staff. Schools will promote the need to follow good hygiene practices such as:

- regularly washing hands.
- avoiding sharing drinks or food.

- coughing or sneezing into your elbow, or a tissue which should be discarded immediately.

Students will be supported to [learn from home](#) in the following circumstances:

- If they are required to self-isolate due to being a close contact of a positive or suspected COVID-19 case.
- Where the school is directed under public health advice to only remain operational for children of essential workers if an outbreak of COVID-19 was to arise in the local area.

Wearing face masks and temperature screening

Staff, students and school visitors are not required to wear a face mask while at school. Anyone who wishes to wear their own masks in schools will not be prevented from doing so.

Widespread temperature screening is not required or recommended in schools.

School activities and school site usage

What's changed

The following activities have been updated:

- Parents, carers and relatives are welcome in our schools.
- There are no limits for singing groups or in-class educational activities such as group repetition, chanting or recitation.
- P&C meetings and events are permitted in a COVID-safe way.
- Dancing activities, including dance classes, balls and social events, can proceed in a COVID-safe way.
- School sporting activity requirements, whether indoors or outdoors, are aligned with those in place for other [community sporting competitions and training activities](#)[External link](#) in NSW.

Continue reading for further information.

All schools may adopt the following changes:

- Parents, carers and relatives may enter the school to drop off and pick up students in accordance with local school COVID-safe arrangements.
- P&C meetings and other gatherings of parents and/or community members for school events (such as working bees) can proceed. All participants must continue to comply with the gathering limits prescribed by the Public Health Orders. Physical distancing and hygiene measures should be applied where practicable.
- All visitors to a school site must comply with sign-in arrangements. This includes the requirement to sign the school sign-in sheet where they acknowledge that

they will comply with the COVID-19 requirements for visitors, contractors and service providers each time they visit. Visitors must also check in using the Service NSW QR code.

- Schools can welcome parents, carers and relatives to attend school sporting events and activities, whether indoors or outdoors, in line with the requirements in place for other [community sporting competitions and training activities](#)[External link](#) in NSW.
- Students are able to mix together across year groups or other cohorts for all school related activities.
- School orientation programs can continue.
- There are no recommended limits on the number of performers in singing groups, including for in-class educational activities such as group repetition, chanting, recitation, or singing activities.
- Musical groups including bands and ensembles are permitted. Students and staff must comply with the Safe Health Practices infection control requirements.
- Interstate field trips, excursions and camps can continue where interstate border requirements permit.
- Schools in the border regions can continue to engage in swimming and other activities using venues in other states or territories where border requirements permit.

School activities and school site usage without change

Schools will apply the following guidelines to adhere to NSW Health advice:

- Interschool activities can continue to take place.
- External providers delivering educational services can proceed with a COVID-19 Safety Plan in place.
- Activities involving musical instruments can proceed.

Activities on hold

The following events will continue to be reconsidered. For now, these events must remain on hold.

- International excursions (cancelled until further notice).
- Certain large arts and sports events are cancelled or delayed because they require feeder activities and have long lead time organisational arrangements. Please speak to your schools if you would like to know more.

School events including performances, productions, plays and other social activities

School performances, productions, plays, concerts and other events can continue. These events must comply with the department's guidelines and NSW Health requirements for COVID safe events.

Schools must have in place and comply with the relevant [COVID-19 Safety Plan](#)[External link](#) when planning and conducting these events. The following considerations for schools apply:

- Ensure that all attendees, including students, staff and visitors, parents and carers, are well and free of any flu-like symptoms.
- Special guests such as the Local Member of Parliament and videographer or photographer may attend events.
- Events held on school sites will need to limit guests based on the [relevant square metre rules](#)[External link](#). Schools will need to invite guests based on the total number of people (this includes staff, students, parents & carers or visitors) who are able to be accommodated.
- All visitors to a school site must comply with sign-in arrangements. This includes the requirement to sign the school sign-in sheet where they acknowledge that they will comply with the COVID-19 requirements for visitors, contractors and service providers each time they visit. Visitors must also check in using the Service NSW QR code.
- The school is required to maintain a record of names and contact details for all attendees including school staff and visitors for at least 28 days after the event. This record must only be used for the purposes of contact tracing for COVID-19 infections and be stored confidentially and securely.
- When holding events at external venues, all external venues and providers must have a COVID-19 Safety Plan to ensure health and safety measures are in place.

Physical distancing

Physical distancing of students in schools is not required.

All teachers, support staff and parents should maintain physical distance from each other (1.5m) where practicable.

Parents are encouraged to physically distance from one another and staff during school pick-up and drop-off times where practicable.

Boarding schools

Boarding schools must adhere to the same COVID-19 requirements that all NSW schools follow. In addition:

- Students residing at a boarding school can mix with other students without restriction while in residential areas of the school
- Boarding students may continue to attend local gyms, boxing, water polo and other events in the community after school hours.

- Parents or carers may continue to take students off school grounds for activities to spend time with them.
- Orientation for boarders may continue as arranged by the school including an opportunity for students to stay in the boarding house.

Border restrictions

All students and staff are able to cross borders to attend school and work. There may be a need to complete a declaration form in some locations to meet border requirements. Be sure to check the [relevant border authority](#)^{External link} to ensure you meet the necessary requirements.

Schools will be advised when there are changes to any border requirements impacting schools.

School cleaning and hygiene supplies

Your school will continue to receive additional cleaning in line with the AHPPC guidelines and advice from NSW Health. Target areas include high-touch areas and other hard surfaces, door handles, lockers, light switches and handrails in stairways and movement areas. There will also be additional cleaning of toilets and bubblers and topping up of supplies like soap.

Essential hygiene supplies

To support NSW schools during COVID-19 and help keep them safe, we've secured and dispatched a range of products including soap, hand sanitiser, toilet paper, disinfectant wipes and personal protective equipment.

Schools will continue to provide hygiene products including liquid soap, hand sanitiser, paper towels, surface spray and disinfectant wipes.

Responding to COVID-19 cases

There is a clear plan in place for schools to respond to any suspected or confirmed cases of COVID-19 in our schools. We are working closely with NSW Health and will communicate with parents if a situation arises. Read more about our [Response protocols for COVID-19 cases](#).

Transport

Bus services to and from schools continue to operate as normal. For travel advice to and from school, refer to [Transport for NSW](#)^{External link}.

Staff and students are not required to wear face masks when travelling on public transport.

Message from the Office

Payment

When making a payment online you can pay up to 3 DAYS before the due date of the payment. This is due to online transactions taking 48 hours to process.

Other payment methods such as cash or cheque can also be sent to the front office and placed in the blue box labelled “**School Post**”.

Please note that we do not accept online payment for uniform or canteen orders. Please see the uniform or canteen order form for payment details.

Permission Notes

If you have more than once child we need to have a note for each child, not all on one note please.

Change of Contact/Address details

Please inform the office immediately if you have changed your contact or address details, so we can contact you in case of an emergency.

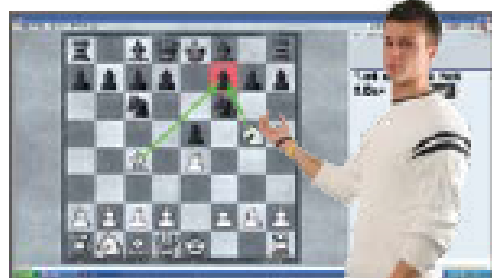
Bicycle and Scooter Guidelines

If you give permission for your child to ride a bicycle or scooter to and/or from school, and store it on the school grounds, please carefully read and sign the ‘**Bicycle and Scooter Guidelines**’ document (obtained from the Front Office). These signed forms are to be returned to the office. Once we have received the signed documentation, the school will record that your child has permission from you to ride to school. Please see Mrs Vermiglio or the office for details.

Why Chess?

- Create Brighter Thinkers
- Improve Student Focus
- Achieve Academic Success

**Combines
learning
with fun!**



Educational Benefits:

- Improves concentration and focus
- Develops logical thinking and problem solving skills
- Enhances memory
- Encourages creative and lateral thinking
- Promotes discipline
- Accelerates emotional development
- Expands visualisation and spatial awareness
- Demonstrates actions and consequences
- Rewards correct decision making
- Increases self-confidence
- Provides opportunities to make new friends from diverse backgrounds

Concord Public School Chess Classes, 2021 Mondays 8:00AM - 8:55AM in Room A6 (Caringa building)

Term 2	Cost: \$92	26th Apr - 21st Jun*
Term 3	Cost: \$103.50	19th Jul - 13th Sep
Term 4	Cost: \$115	11th Oct - 13th Dec

*No chess on 14th June (Public Holiday)

To enrol please pay online with your credit card at
www.sydneyacademyofchess.com.au/payment

Enter the code **WGL3A2LD3D** and fill in the electronic form, with your child's details.

Fees are due on the first day of term. A late fee of \$10 will be applied if payment is not received within 4 weeks of the start of the term. No refunds or credits for missed lessons during the term and trial lessons must be paid for. For pro-rata fees (ie. starting part way during the term) please contact Sydney Academy of Chess on 0745 1170.

OPTIONAL EXTRAS (prices include delivery)		
<i>To enhance your child's learning experience these items are available for purchase online at the time of enrolment</i>		
Workbook 1 – Cost: \$31 [For Beginner/Rookie Players]	Workbook 2 – Cost: \$31 [For Intermediate Players]	Workbook 1 & 2 – Cost: \$46 [SPECIAL OFFER]
Exploration In Chess Beauty – Cost: \$42 [For Advanced Players]	Chess Set & Roll-up Board – Cost: \$34 [Recommended for All Ages]	Chess Clock – Cost: \$77 [Recommended for All Ages]



**SYDNEY
ACADEMY OF CHESS**

Sydney Academy of Chess Pty Ltd

ABN: 14 139 982 004

Level 1, 30A George Street Burwood, NSW

PO Box 1325, Burwood, NSW 1805

P: 0745 1170 F: 0745 1178 E: enrolment@sydneyacademyofchess.com.au

School zones: understanding the rules

Children are small,
harder to see, behave
unpredictably and
are extremely vulnerable.

They need you to take extra
care when driving and parking
around school zones.

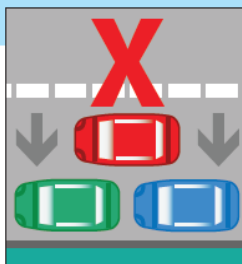
PLEASE CHOOSE SAFETY OVER CONVENIENCE

To help understand school zone traffic rules, refer below to our quick reference guide.

DOUBLE PARKING

You must not stop on the road
alongside a car that is parked at
anytime.

Fine: exceeds \$349
Demerit points: 2



NO PARKING

You have two minutes to drop-off or pick-up and
must stay within three metres of your vehicle.

If no spaces are available you cannot queue on the
road way or in any other zones while waiting for a
space. You will need to drive away and park elsewhere,
only returning when there is space to pull up.

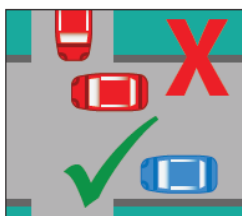
Fine: exceeds \$194
Demerit points: 2



FOOTPATH, DRIVEWAY OR NATURE STRIP

You must not stop across a driveway,
footpath and nature strip for any reason.

Fine: exceeds \$349
Demerit points: 2



NO STOPPING

You cannot stop in a no stopping zone for any
reason (including queuing or waiting for a space).

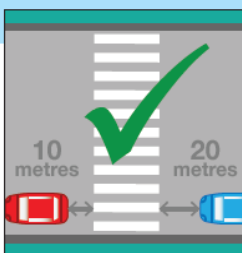
Fine: exceeds \$349
Demerit points: 2



PEDESTRIAN CROSSING

You must not stop on or within 20
metres before a pedestrian crossing or
10 metres after a crossing (unless a sign
allows you to park there).

Fine: exceeds \$464
Demerit points: 2



BUS ZONE

You must not stop or park in a bus zone for any
reason (including queuing or waiting for a space)
unless you are driving a bus.

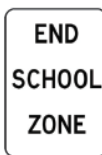
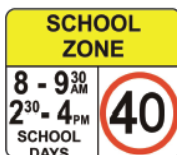
Fine: exceeds \$349
Demerit points: 2



SPEEDING

40km/h school zones are in force on all days which are not a weekend, a public holiday or
a publicly notified school holiday for government schools. School zone days include school
development days, also known as
student-free days.

Fine: maximum penalty \$3,995
Demerit points: +7



PEDESTRIANS

STOP

one step back from the kerb

LOOK

for traffic to your right, left and right again

LISTEN

for the sounds of approaching traffic

THINK

whether it is safe to cross

Information effective at 1 July 2020 and subject to change.

学校地带: 交通安全法规须知

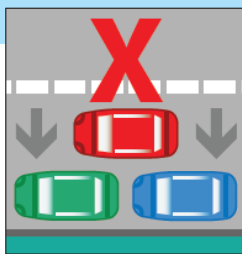
儿童很小，很难看到，
行为无法预测，
是非常脆弱的。
当您在学校地带行驶或者停车时，
请特别小心儿童。

请不要为了一时方便而忽略了交通安全。

为了帮助您了解学校地带的交通规则，请参阅我们的快速参考指南。

双行停车

任何时候您都不能在路上已停放车辆的旁边再停车。
罚款：超过\$349
扣分：2分



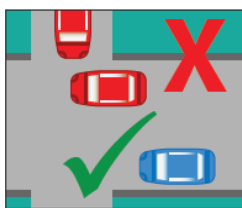
禁止泊车

您有两分钟接送孩子并且您必须保持在距离您的汽车的3米之内。如果路边没有位置可以停车，您不可以道路中或者任何其他路段滞留排队等待车位。您必须开车离开并停在别处，直到有空位了才可以返回。
罚款：超过\$194
扣分：2分



人行道，行车道，绿化隔离带

严禁以任何原因在人行道，行车道和绿化隔离带停车。
罚款：超过\$349
扣分：2分



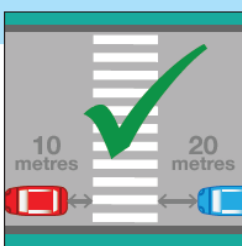
禁止暂停

严禁以任何原因在禁止停留区段滞留（包括排队等待停车位）。
罚款：超过\$349
扣分：2分



人行横道

在人行横道前20米或后10米范围内不得停车（除非有停车标志允许在此停车）。
罚款：超过\$464
扣分：2分



公共汽车停车地带

除非您驾驶的是公共汽车，否则严禁以任何原因在公共汽车停车地带停车（包括排队等待停车位）。
罚款：超过\$349
扣分：2分



超速

学校周围时速限制为40公里/小时在除了周末，公共假日以及公立学校的学校假期以外的所有日期都有效。学校地带限速的日期包括学校发展日(无学生日)。
罚款：最高罚款\$3,995
扣分：7分以上



行人

停
与路边保持至少一步的安全距离
看
观察行驶车辆，右边，左边，然后再右边。
听
留心听车辆驶近的声音
想
想一想是否可以安全通过

信息于2020年7月1日生效，如有更改。

Concord Public School on Twitter



Following

Concord PS

@ConcordPS

Facta Non Verba Deeds not Words

Joined September 2017

62 Following 240 Followers

- *Be Respectful*
- *Participate*
- *Be Safe*

Are you aware that we are on Twitter?

Follow us and see what is happening at Concord Public School

Concord Public School

66 Burwood Road, Concord NSW 2137

Email: concord-p.school@det.nsw.edu.au

Website: www.concord-p.schools.nsw.edu.au/

Tele: 02 9744 8427